



**STAFIX**<sup>TM</sup>  
by Datamars

# POWERING YOUR LAND

**Electric Fence Systems**  
2022 Australia Product Range

[www.stafix.com](http://www.stafix.com)

**INCLUDES** >

**HAYES**<sup>TM</sup>

Tools



# **DATAMARS** ***Livestock***<sup>TM</sup>

**We are a division of Datamars, a global company. Datamars Livestock provides the platform and tools for today's farmers to better manage their livestock.**

We know that when our customers are able to collect and use data to make informed on-farm decisions, they achieve better and more consistent results. Simply, accurate livestock management translates to profitable farming.

Datamars Livestock is here for farmers just like you. We are here to support you through the everyday requirements of livestock farming. Our innovative and well-developed technology works alongside you, in the real nitty-gritty, day to day tasks.

Datamars Livestock links tools that promote animal health, enable precision animal management and improve protein production.

These tools work together, communicating with each other and communicating with you.

When you're working the land, we're there with you. On farm and online, our digital platform connects you with information about your livestock, bolstering your intuition and enabling you to make precise, informed decisions.

Datamars Livestock. Our products work with each other, but most importantly – they work with you.



**Tru-Test**<sup>TM</sup>  
DATAMARS

**Z**  
**TAGS**<sup>TM</sup>  
DATAMARS

**Speedrite**<sup>TM</sup>  
DATAMARS

**STAFIX**<sup>TM</sup>  
by Datamars

**HAYES**<sup>TM</sup>

**Prattley**





# FOR OVER 60 YEARS,

the Stafix range has delivered rugged, reliable electric fence products for safe and effective animal containment and pasture management.

Backed by history and a warranty – we guarantee they'll do the job.

## Stafix provides a full range of electric fencing solutions to suit your needs.

### FOLLOW US



[www.facebook.com/DatamarsLivestockAU](https://www.facebook.com/DatamarsLivestockAU)



Stafix has a range of 'how-to' videos. To view these please visit our YouTube channel [youtube.com/StafixFence](https://youtube.com/StafixFence)

### NEED MORE HELP?

Visit [www.stafix.com](https://www.stafix.com) for more information about our range, contact details and Stafix stockists. Alternatively, refer to the back page for details of your local Datamars office.

**DATAMARS**  
**Livestock**

A business division of Datamars, Datamars Livestock is a global leader in animal identification products, farm infrastructure products, animal performance and monitoring and animal health delivery products. Datamars Livestock includes globally recognised brands Tru-Test, Speedrite, Stafix, Pel, Hayes, Z Tags, NJ Phillips and Simcro.

### CONTENTS:

<b>ENERGIZERS .....</b>	<b>6</b>
Energizer Selection Guide ....	<b>7-8</b>
Mains Energizers .....	<b>9</b>
Unigizers™ .....	<b>12</b>
Solar Systems & Kits .....	<b>17</b>
Portable Solar Energizers .....	<b>20</b>
Battery Energizers .....	<b>23</b>
<b>MANAGEMENT TOOLS .....</b>	<b>26</b>
<b>PERMANENT FENCING.....</b>	<b>30</b>
<b>PERMANENT FENCING</b>	
Checklist.....	<b>30</b>
Insulators.....	<b>32</b>
Strainers .....	<b>35</b>
Cable & Specialised Wire .....	<b>37</b>
Outriggers .....	<b>38</b>
Semi-Permanent Posts .....	<b>39</b>
Gate Hardware .....	<b>40</b>
General Accessories .....	<b>43</b>
<b>TEMPORARY FENCING .....</b>	<b>46</b>
Temporary Fencing	
Checklist.....	<b>46</b>
Tape, Wire, Braid and Rope	
Products .....	<b>48</b>
Reels .....	<b>50</b>
Temporary Fence Posts .....	<b>52</b>
General Accessories .....	<b>52</b>
<b>EARTH SYSTEMS .....</b>	<b>54</b>
<b>HAYES FENCE TOOLS.....</b>	<b>58</b>
<b>TERRITORY MANAGERS .....</b>	<b>61</b>



# Choosing your Energizer

**Stafix offers a range of energizers to suit the way you manage your farm.**



## MAINS RANGE



A mains powered energizer is the most cost-effective, reliable way to power a permanent electric fence. Unigizers™ are also compatible with mains power.

Powers 500 – 1300 acres



## UNIGIZER™ RANGE



A Unigizer™ is a flexible, all-in-one mains and battery energizer with solar compatibility. It is a versatile solution that works across permanent, semi-permanent and temporary fencing.

Powers 15 – 270 acres (10 – 180 km) of fence



## SOLAR RANGE



Ideal for isolated areas where no mains power is available. Suitable for strip grazing, permanent, semi-permanent and temporary fencing. Our Solar Systems and Kits provide remote power for permanent installations. Our Portable Solar Energizers are an all-in-one solution with built-in solar panel and battery. The Unigizer range is also solar compatible.

Powers up to 270 acres (2 – 180 km) of fence



## BATTERY RANGE



Convenient, portable and quick to set up, battery units are suitable for temporary, strip grazing and semi-permanent fencing. Unigizers™ are also compatible with battery power.

Powers up to 1 - 2 km of fence

## Energizers

**Just like the Stafix Bull our energizers are a symbol of strength and power.**

Stafix energizers are the result of decades of intense research and development. Our energizer range features unique technologies which gives them a market leading edge. Packed with power and dependable performance – guaranteed!



# Easy to follow packaging

Here's what to look for when you are in-store:

**OUTPUT ENERGY (JOULES):**  
Maximum amount of energy (joules) that can travel from the energizer to the fence line

**STORED ENERGY (JOULES):**  
Maximum amount of energy (joules) that is stored by the energizer

**KM / MILES:**  
The maximum length of fence the energizer will power

**ACRES / HA:**  
An approximate indication of the area that the energizer will electrify



# Comparing Energizers

When evaluating energizers, be sure to compare them on the same basis. It is best to compare energizers by looking at the **Maximum Output Energy (joules)**.

	What area/distance do you want the energizer to power?	How will you power your fence?	Recommended Energizer	Stored Energy (joules)	Maximum Output Energy (joules)
LARGE	Up to 1300 acres / 500 ha	Mains	86000W	128 J	86 J
	Up to 640 acres / 260 ha (460 km)	Mains	46000W	68 J	46 J
MEDIUM	Up to 270 acres / 110 ha (180 km)	Mains / Battery / Solar	X18i	24 J	18 J
	Up to 180 acres / 70 ha (120 km)	Mains / Battery / Solar	X12i	16 J	12 J
SMALL	Up to 90 acres / 30 ha (60 km)	Mains / Battery / Solar	X6i	9 J	6 J
	Up to 45 acres / 18 ha (30 km)	Mains / Battery / Solar	X3	4.5 J	3 J
	Up to 30 acres / 12 ha (20 km)	Mains / Battery / Solar	X2	2.7 J	2 J
	Up to 15 acres / 6 ha (10 km)	Mains / Battery / Solar	X1	1.4 J	1 J
	Up to 8 acres / 3 ha (5 km)	Mains / Battery / Solar	X0.5	0.7 J	0.5 J
	Up to 15 acres / 6 ha (10 km)	Solar	S1000	1.6 J	1.2 J
	Up to 8 acres / 3 ha (5 km)	Solar	S500	0.63 J	0.5 J
	3 acres / 1.2 ha (2 km)	Solar	S150	0.2 J	0.15 J
	Up to 1 km	Solar	S80	0.11 J	0.08 J
	Up to 2 km	Battery	AN90	0.16 J	0.12 J
	Up to 1 km	Battery	AN20	0.05 J	0.04 J

NOTE: Area recommendations are a guide only and in multiple wire terms. Performance will be affected by the condition of your fence.

# Mains Energizers

Stafix mains powered energizers are high performing, powerful units designed for extensive electric fence systems.



# Comparing Mains

For mains powered Unigizer™ specifications see Comparing Unigizers™ table on pg 14.

	86000W	46000W
AREA/DISTANCE YOU WANT THE ENERGIZER TO POWER	1300 acres 500 ha	640 acres 260 ha 460 km
MAXIMUM OUTPUT ENERGY	86 J	46.0 J
MAXIMUM STORED ENERGY	128 J	68.0 J
NO LOAD VOLTAGE	10,000 V	9,500 V
MEDIUM LOAD VOLTAGE @ 500 Ω	10,000 V	9,300 V
HEAVY LOAD VOLTAGE @ 100 Ω	6,800 V	8,900 V
MINIMUM NUMBER OF EARTH RODS	12	9
INPUT VOLTAGE	120 - 240 V	100 - 240 V



# Mains Energizer features explained:



## CYCLIC WAVE™ TECHNOLOGY

Provides a cleaner, more powerful pulse, maximising the energy that travels down the fence for optimal stock control.

## BI-POLAR TECHNOLOGY

Enables the user to power a fence system to perform exceptionally well in dry, low conductive soil.

## REMOTE CAPABLE

Using a Stafix fence remote (with remote capable Stafix energizers) enables you to switch the energizer on or off from anywhere along the fence line. This makes it easy to manage repairs and maintenance.

## INDICATOR LIGHTS (VOLTAGE)

Easy to read light bar display provides an instant measure of the energizer output voltage for quick fence diagnostics. The LED display shows red when heavily loaded.

## DATAMARS LIVESTOCK: FARM MOBILE APP

Connect to your energizer and see the fence voltage in real-time, configure your energizer settings, and connect the energizer to your Wi-Fi network. (46000W and 86000W only)

## COMPACT, RUGGED DESIGN

Hi-tech components and advanced research and development have enabled us to make powerful energizers in a compact, rugged polymer case.

## LARGE TERMINALS

Mounted on the front of the energizer casing for convenience, these large terminals are easily adjusted and accept up to two fence wires. The slotted terminals make inserting wires and getting a good connection easy. Split bolt terminals available in some models.

## LOW INTERFERENCE

Cyclic Wave™ technology delivers outstanding fence performance and helps to minimise electromagnetic interference in line with international EMC standards.

## LOAD RESPONSE FEATURE

Controls energizer output to match conditions, providing maximum fence voltage for effective stock control.

## 3 YEAR WARRANTY

We stand behind the reliability of our products. Visit [www.stafix.com](http://www.stafix.com) for full warranty details.



## 86000W

**86000W** Mains Energizer  
(Remote with Fault Finder included)

**Powers up to 1300 acres / 500 ha of fence**  
**86 J maximum output energy** (128 J stored energy)

- |                              |                               |
|------------------------------|-------------------------------|
| ⚡ Cyclic Wave technology     | Half voltage terminal         |
| ⚡ Bi-polar technology        | Best in class terminal design |
| 📱 Remote capable             | Datamars Livestock: Farm App* |
| 📱 Indicator lights (voltage) | 3 year warranty.              |
| Compact, rugged design       |                               |
| Large terminals              |                               |
| Low interference             |                               |

86000W 880 0010-975 55278552  
\*Base plan included free with purchase



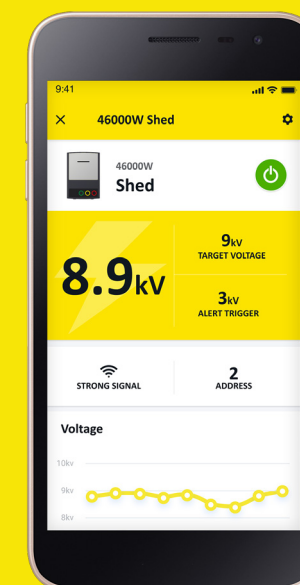
## 46000W

**46000W** Mains Energizer  
(Remote with Fault Finder included)

**Powers up to 640 acres / 260 ha** (460 km) of fence  
**46 J maximum output energy** (68 J stored energy)

- |                              |                               |
|------------------------------|-------------------------------|
| ⚡ Cyclic Wave technology     | Half voltage terminal         |
| ⚡ Bi-polar technology        | Best in class terminal design |
| 📱 Remote capable             | Datamars Livestock: Farm App* |
| 📱 Indicator lights (voltage) | 3 year warranty.              |
| Compact, rugged design       |                               |
| Large terminals              |                               |
| Low interference             |                               |

46000W 480 0002-029 55227789  
\*Base plan included free with purchase



**Keep your fence performance close at hand**

Monitor and control the 86000W and 46000W mains energizer from your smartphone, with the Datamars Livestock: Farm App.



DATAMARS  
**Livestock**



# Unigizers™

Stafix Unigizers™ give you a versatile 3-in-1 solution to manage your electric fence system.

You have the flexibility to choose from either mains, battery or solar energy to power your electric fence.

The 3-in-1 capability allows the Unigizer to be used for temporary, semi-permanent, permanent and strip grazing fence systems. It's never been easier to create an electric fencing solution.



## Unigizer™ features explained:



### CYCLIC WAVE™ TECHNOLOGY

Provides a cleaner, more powerful pulse, maximising the energy that travels down the fence for optimal stock control.

### BI-POLAR TECHNOLOGY

Enables the user to power a fence system to perform exceptionally well in dry, low conductive soil.

### LOW ENERGY TERMINAL

Limits energy to below 1.5 J for use around buildings and houses.

### SOLAR COMPATIBLE

Electrify your fence with solar power by connecting solar panels to any Stafix Unigizer™. The solar panels charge the battery connected to the Unigizer, for reliable livestock control.

### REMOTE CAPABLE

Using a Stafix fence remote (with remote capable Stafix energizers) enables you to switch the energizer on or off from anywhere along the fence line. This makes it easy to manage repairs and maintenance.

### LCD VOLTAGE DISPLAY

Displays output voltage, battery voltage and earth voltage. LCD is backlit for viewing in poor light conditions. On selected models only.

### INDICATOR LIGHTS (VOLTAGE & BATTERY)

Easy to read light bar display provides an instant measure of the Unigizer output voltage and battery condition for quick fence diagnostics. The LED display shows red when heavily loaded.

### BATTERY SAVER

Microprocessor technology automatically adjusts the output energy depending on the battery condition. This feature extends battery life and is particularly effective when used in solar installations.

### DAY/NIGHT SENSOR

Automatically adjusts to contain or exclude animals based on day or night conditions.

### LARGE TERMINALS

Mounted on the front of the energizer casing for convenience, these large terminals are easily adjusted and accept up to two fence wires. The slotted terminals make inserting wires and getting a good connection easy.

### LOW INTERFERENCE

Cyclic Wave™ technology delivers outstanding fence performance and helps to minimise electromagnetic interference in line with international EMC standards.

### EARTH MONITORING

Indicates earth system problems by monitoring the level of voltage around the earth system.

### VERSATILE MOUNTING OPTIONS

Can be mounted on a wall, post or fence wire. Choose indoor or outdoor installation, depending on your fence location and power supply.

### VERSATILE POWER OPTIONS

Can be used in mains, battery or solar power applications, providing convenient, versatile livestock control.

### 3 YEAR WARRANTY

We stand behind the reliability of our products. Visit [www.stafix.com](http://www.stafix.com) for full warranty details.



# Comparing Unigizers™



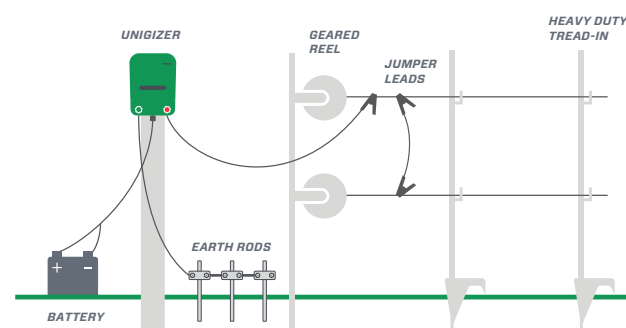
	X18i	X12i	X6i	X3	X2	X1	X0.5
AREA/DISTANCE YOU WANT THE ENERGIZER TO POWER	270 acres 110 ha 180 km	180 acres 70 ha 120 km	90 acres 36 ha 60 km	45 acres 18 ha 30 km	30 acres 12 ha 20 km	15 acres 6 ha 10 km	8 acres 3 ha 5 km
MAXIMUM OUTPUT ENERGY	18.0 J	12.0 J	6.0 J	3.0 J	2.0 J	1.0 J	0.5 J
MAXIMUM STORED ENERGY	24.0 J	16.0 J	9.0 J	4.5 J	2.7 J	1.4 J	0.7 J
NO LOAD VOLTAGE	9,900 V	9,100 V	9,500 V	11,400 V	11,000 V	9,800 V	8,300 V
MEDIUM LOAD VOLTAGE @ 500 Ω	7,700 V	7,700 V	6,700 V	6,200 V	5,900 V	5,300 V	4,400 V
MINIMUM NUMBER OF EARTH RODS	6	6	4	3	3	2	1
INPUT VOLTAGE	12 V / 100 - 240 V	12 V / 100 - 240 V	12 V / 100 - 240 V	12 V / 100 - 240 V	12 V / 100 - 240 V	12 V / 100 - 240 V	12 V / 100 - 240 V

NOTE: Area recommendations are a guide only and in multiple wire terms. Performance will be affected by the condition of your fence. For installation instructions visit [www.stafix.com/resources](http://www.stafix.com/resources).

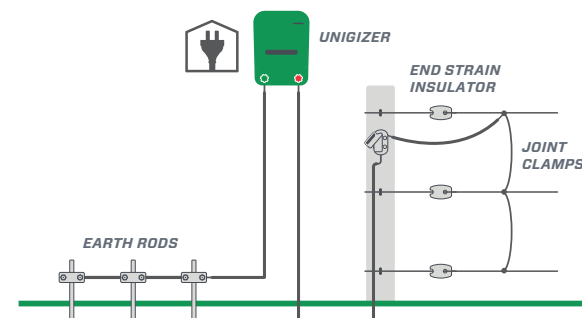
## Unigizer Mounting Examples

Sample diagrams showing Unigizer and earth system. The number of earth rods will vary, depending on the Unigizer and soil conditions.

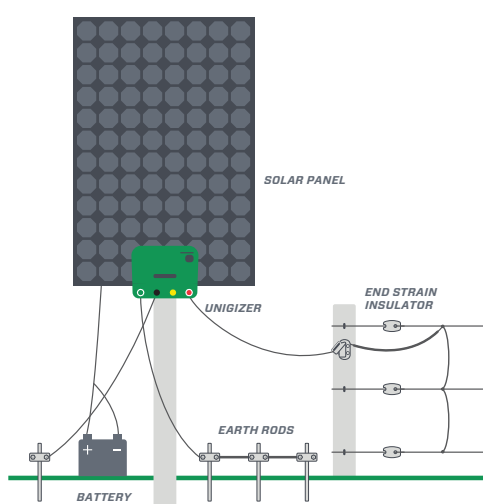
OUTDOORS WITH 12 V BATTERY



INDOOR DRY LOCATIONS WITH MAINS POWER ADAPTOR



OUTDOORS WITH 12 V BATTERY AND UNIGIZER SOLAR KIT



### X18i

**Powers up to 270 acres / 110 ha** (180 km) of fence  
**18 J maximum output energy** (24 J stored energy)

- Cyclic Wave™ technology

Low energy terminal

Solar compatible

Remote capable (remote sold separately 880 0000-509)

LCD voltage display

Indicator lights (voltage and battery)

Battery saver

Day/Night sensor – pulse speed
- Large terminals

Low interference

Earth monitoring

Versatile mounting and power options

Adjustable output power and pulse speeds

3 year warranty.

Includes battery lead and mains power adaptor.

880 0000-332

55135023



### X6i

**Powers up to 90 acres / 36 ha** (60 km) of fence  
**6 J maximum output energy** (9 J stored energy)

- Cyclic Wave technology

Bi-polar technology

Solar compatible

Remote capable (remote sold separately 880 0000-509)

LCD voltage display

Indicator lights (voltage and battery)

Battery saver

Day/Night sensor – pulse speed

Large terminals
- Low Interference

Earth monitoring

Versatile mounting and power options

Half voltage terminal

Adjustable output power and pulse speeds

3 year warranty.

Includes battery lead and mains power adaptor.

880 0000-812

55005521



### X12i

**Powers up to 180 acres / 70 ha** (120 km) of fence  
**12 J maximum output energy** (16 J stored energy)

- Cyclic Wave technology

Bi-polar technology

Solar compatible

Remote capable (remote sold separately 880 0000-509)

LCD voltage display

Indicator lights (voltage and battery)

Battery saver

Day/Night sensor – pulse speed
- Large terminals

Low Interference

Earth monitoring

Versatile mounting and power options

Half voltage terminal

Adjustable output power and pulse speeds

3 year warranty.

Includes battery lead and mains power adaptor.

880 0000-640

55009232



### X3

**Powers up to 45 acres / 18 ha** (30 km) of fence  
**3 J maximum output energy** (4.5 J stored energy)

- Solar compatible

Indicator lights (voltage and battery)

Day/Night sensor – pulse speed

Large terminals

Versatile mounting and power options

Adjustable output power and pulse speeds

3 year warranty.
- Includes battery lead and mains power adaptor.

880 0000-299

55175900





## X2

**Powers up to 30 acres / 12 ha** (20 km) of fence  
**2 J maximum output energy** (2.7 J stored energy)

Solar compatible	Includes battery lead and
Indicator lights	mains power adaptor.
(voltage and battery)	
Day/Night sensor	
– pulse speed	
Large terminals	
Versatile mounting	
and power options	
Adjustable output power	
and pulse speeds	
3 year warranty.	

880 0000-737

55175899



## X0.5

**Powers up to 8 acres / 3 ha** (5 km) of fence  
**0.5 J maximum output energy** (0.7 J stored energy)

Solar compatible	Includes battery lead and
Indicator light (pulse)	mains power adapter.
Large terminals	
Versatile mounting	
and power options	
3 year warranty.	

880 0000-342

55175897



## X1

**Powers up to 15 acres / 6 ha** (10 km) of fence  
**1 J maximum output energy** (1.4 J stored energy)

Solar compatible	Includes battery lead and
Indicator lights	mains power adaptor.
(voltage and battery)	
Day/Night sensor	
– pulse speed	
Large terminals	
Versatile mounting	
and power options	
Adjustable output power	
and pulse speeds	
3 year warranty.	

880 0000-773

55175898

# Solar Systems & Kits

**We offer a range of solar systems and kits for solar compatible energizers.**





# Unigizer™ Solar System features explained:



## AUTOMATIC RUN TIME EXTENSION

Unigizers automatically adjust pulse speed when battery power level falls to a set level. This feature helps extend battery life particularly during long periods of bad weather.

## MANUAL RUN TIME EXTENSION OPTIONS

Slow pulse speed, low power or slow at night modes are available to conserve battery power if needed during very long periods of bad weather.

## BATTERY CHECK MODE

Easy to read light bar display provides an instant measure of the Unigizer output voltage and battery condition for quick fence diagnostics. The LED display shows red when heavily loaded.

## CUSTOMISED SOLAR PANEL AND BATTERIES

Designed to handle the specific performance requirements of the solar system. This ensures the system keeps running in the worst winter conditions, providing reliable livestock control.

## INTELLIGENT POWER REGULATOR

Designed to get the most out of the solar panel and minimise the loss of energy. It ensures energy obtained from the solar panel is maximised and efficiently distributed, delivering up to 30% more power to the batteries.

## EASY SET UP AND INSTALLATION

Comprehensive and clear installation instructions are included, along with all the hardware required to mount solar panels and make electrical connections.

## ROBUST DESIGN

Mounting brackets, electrical enclosures and connections are all designed to withstand the harsh environment.

# Unigizer™ Solar Systems

## What is a Unigizer Solar System?

UNIGIZER™

+

BATTERY\*

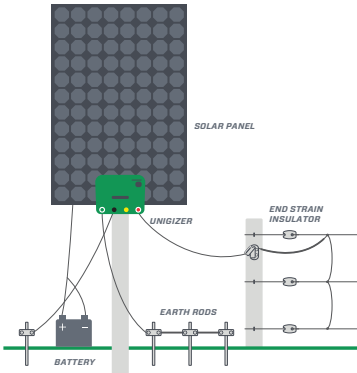
+

SOLAR KIT

In a solar system installation your Unigizer is powered by a battery which is charged by the solar panel during the day.

Based on average sunlight hours in your region and the output of our Unigizers, your Stafix retailer/distributor will identify the appropriate system for your needs.

\*Sold separately in some markets.



### EASY

Our solar systems are easy to understand, easy to select and easy to install and operate. **We've done the work so you don't have to.**

### RELIABLE

They have been designed to ensure the fence stays running in harsh winter conditions – **when you need it most.**

### AFFORDABLE

They are an affordable alternative to mains installations, providing the **flexibility** to power remote “off grid” sites and the **security** of having multiple Unigizers powering the farm.

Solar System - X18i	Powers up to 275 acres / 110 ha (180 km) of fence
Solar System - X12i	Powers up to 180 acres / 70 ha (120 km) of fence
Solar System - X6i	Powers up to 90 acres / 36 ha (60 km) of fence
Solar System - X3	Powers up to 45 acres / 18 ha (30 km) of fence
Solar System - X2	Powers up to 30 acres / 12 ha (20 km) of fence
Solar System - X1	Powers up to 15 acres / 6 ha (10 km) of fence

**NOTE:** Stafix recommends the use of 12 V deep cycle batteries. Requirements and availability of solar panels vary between different countries.

## Solar Kits

If you already own a Unigizer, Solar Kits can be purchased separately to allow for repairs or upgrades to existing installations.

Stafix Solar Kits contain all components required for your region, including: solar panel(s), regulator and mounting bracket. Unigizers sold separately.



# Portable Solar Energizers

Stafix portable solar energizers incorporate an internal battery and are perfect for strip grazing or powering a small area. These self contained energizers feature an integrated solar panel and a sophisticated battery management system in a rugged carry case.



## Portable Solar Energizer features explained

### 3 YEAR WARRANTY

We stand behind the reliability of our products. Visit [stafix.com](http://stafix.com) for full warranty details.

### STEEL AND WOOD POST MOUNTING OPTIONS

High impact enclosure is designed to securely mount on Y-posts and wood posts.

### REQUIRES MINIMAL SUNLIGHT

Energizer requires minimal sunlight hours to keep battery at, or near, full charge. They can last all year without needing to manually charge.

### RECHARGEABLE INTERNAL BATTERY

Rechargeable internal sealed battery included. Maximum battery life is 3+ years.

### EASY BATTERY ACCESS WHEN MOUNTED ON POST

### BATTERY RECHARGE

Energizer intelligently manages battery recharging during fine weather.

### HIGH OUTPUT VOLTAGE

9,500 V output.

### RUGGED DESIGN

UV resistant case provides maximum weather protection for extreme environments.

### BATTERY SAVER

Microprocessor technology automatically adjusts the output energy depending on the battery condition. This feature is designed to extend battery life.

### INDICATOR LIGHT

Located on the front of the energizer, indicates the solar energizer is operating.

\*Warranty excludes battery. Batteries fitted inside energizers have a 90 day warranty.



**\$1000**



**Powers up to 10 km** of fence  
**1.0 J maximum output energy** (1.30 J stored energy)

- Requires minimal sunlight
- Indicator light (pulse)
- Battery saver
- Rugged design
- High output voltage
- Rechargeable internal battery
- Steel and wood post mounting options
- On/Off switch
- 3 year warranty
- Comes with built-in solar panel

880 0002-627 55206713

**\$150**



**Powers up to 2 km** of fence  
**0.15 J maximum output energy** (0.21 J stored energy)

- Requires minimal sunlight
- Indicator light (pulse)
- Battery saver
- Rugged design
- High output voltage
- Rechargeable internal battery
- Steel and wood post mounting options
- On/Off switch
- 3 year warranty
- Comes with built-in solar panel

880 0002-606 55205718

**\$500**



**Powers up to 5 km** of fence  
**0.50 J maximum output energy** (0.65 J stored energy)

- Requires minimal sunlight
- Indicator light (pulse)
- Battery saver
- Rugged design
- High output voltage
- Rechargeable internal battery
- Steel and wood post mounting options
- On/Off switch
- 3 year warranty
- Comes with built-in solar panel

880 0002-624 55206714

**\$80**



**Powers up to 1 km** of fence  
**0.08 J maximum output energy** (0.11 J stored energy)

- Requires minimal sunlight
- Indicator light (pulse)
- Battery saver
- Rugged design
- High output voltage
- Rechargeable internal battery
- Steel and wood post mounting options
- On/Off switch
- 3 year warranty
- Comes with built-in solar panel

880 0002-609 55205719

## Comparing Portable Solar Energizers



	\$1000	\$500	\$150	\$80
AREA/DISTANCE*	10 km 15 acres	5 km 8 acres	2 km 3 acres	1 km
MAXIMUM OUTPUT ENERGY	1.00 J	0.50 J	0.15 J	0.08 J
MAXIMUM STORED ENERGY	1.30 J	0.65 J	0.21 J	0.11 J
NO LOAD VOLTAGE	9,600 V	9,800 V	9,300 V	7,300 V
LIGHT LOAD VOLTAGE AT 2000 Ω	7,100 V	6,200 V	4,100 V	3,200 V
STANDARD LOAD VOLTAGE AT 1000 Ω	5,600 v	4,500 v	2,600 V	2,100 V
MINIMUM NUMBER OF EARTH RODS	1	1	1	1
INPUT VOLTAGE	12 V internal battery		6 V internal battery	

\*Warranty excludes battery. Batteries fitted inside energizers have a 90 day warranty.

## Battery Energizers

**Stafix battery energizers provide a portable and practical solution for strip grazing and temporary electric fence systems.**





# Portable Battery Energizer features explained:



## FAST AND SLOW OPTIONS

Adjustable pulse settings allows energizer to be set to slow or fast mode to extend battery life.

## DAY/NIGHT SENSOR

Automatically adjusts pulse speed to contain or exclude animals based on day or night conditions. The energizer can be set to automatically send out fast pulse speed during the day for livestock control and slow at night to manage diurnal animals.

## BATTERY SAVER

Microprocessor technology automatically adjusts the output energy depending on the battery condition, extending battery life.

## SIMPLE SET UP

Clips directly to fence wire for convenient, fast set up.

## 3 STAGE LIGHT BAR

Easy to read light bar provides a quick indication of output voltage and battery power level (when set to battery check mode).

## DURABLE WEATHER AND UV RESISTANT CASE

UV resistant case provides maximum weather protection for extreme environments.

## DUAL POWER SUPPLY OPTIONS

Can be powered by internal or external batteries for greater flexibility.

## 3 YEAR WARRANTY

We stand behind the reliability of our products. Visit [www.stafix.com](http://www.stafix.com) for full warranty details.



## AN90 VERSATILE STRIP GRAZING UNIT

**Powers up to 2 km** of fence  
**0.12 J maximum output energy** (0.16 J stored energy)

- |                         |                            |
|-------------------------|----------------------------|
| Simple set up           | 3 year warranty.           |
| On/Off switch           |                            |
| Fast and slow options   |                            |
| Optional tread-in stand | Also available with stand. |
| Flashing LED            |                            |

880 0000-977 AN90	55048024
880 0000-964 AN90 with stand	55048025



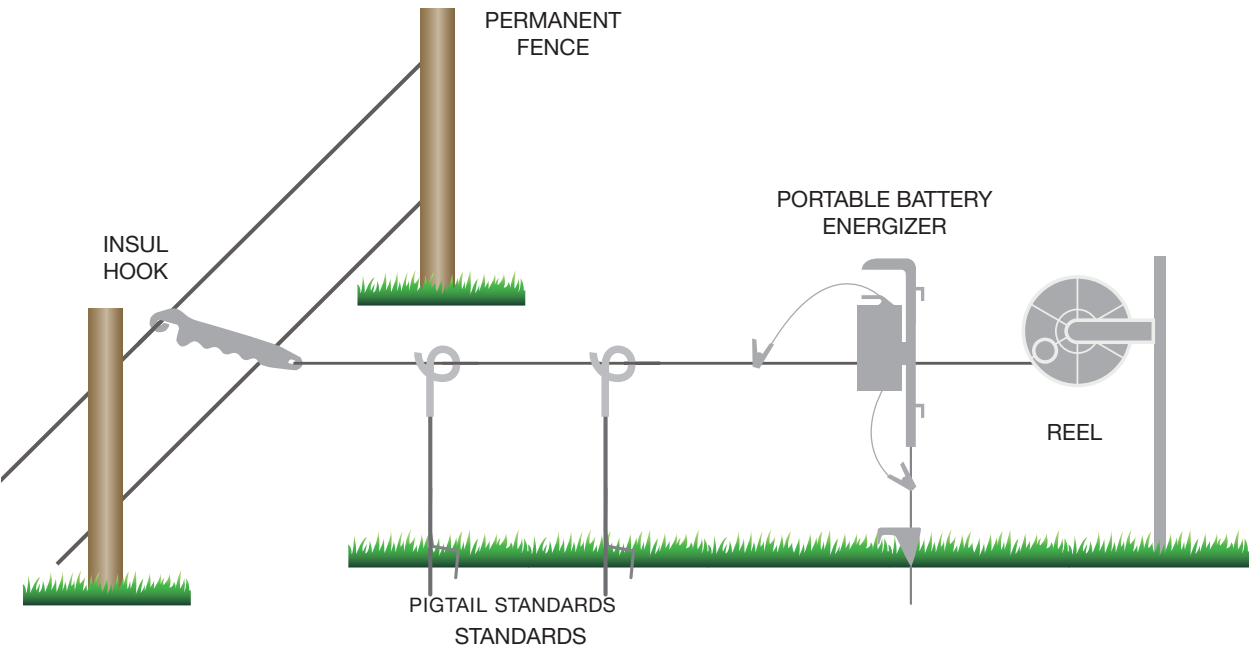
## AN20

**Powers up to 1 km** of fence  
**0.04 J maximum output energy** (0.05 J stored energy)

- |   |  |
|---|--|
| Simple set up   |  |
| On/Off switch   |  |
| Battery saver   |  |
| Intelligent battery management to extend battery life |  |
| 3 year warranty.                                      |  |

880 0000-469	55108241
--------------	----------

## Portable Battery Energizer Mounting Example



# Comparing Battery Energizers



For battery powered Unigizer™ specifications see Comparing Unigizers™ table on pg 14.

	STRIP GRAZING ENERGIZERS	
	AN90	AN20
AREA/DISTANCE YOU WANT THE ENERGIZER TO POWER	2 km	1 km
MAXIMUM OUTPUT ENERGY	0.12 J	0.04 J
MAXIMUM STORED ENERGY	0.16 J	0.05 J
NO LOAD VOLTAGE	8,000 V	5,800 V
LIGHT LOAD VOLTAGE @ 2,000 Ω	4,500 V	2,800 V
MINIMUM NUMBER OF EARTH RODS	1	1
BATTERY TYPE (SOLD SEPARATELY)	4 x D batteries or 12 V or 6 V external battery	2 x D batteries

NOTE: Area recommendations are a guide only and in multiple wire terms. Performance will be affected by the condition of your fence. For installation instructions visit [www.stafix.com/resources](http://www.stafix.com/resources).



A man in a brown vest is using a yellow fence tester on a wire fence. The background shows a rolling green landscape with a winding road and distant hills.

# Management Tools

**To get the maximum performance from an energizer you need to be able to measure and monitor your fence system effectively.**

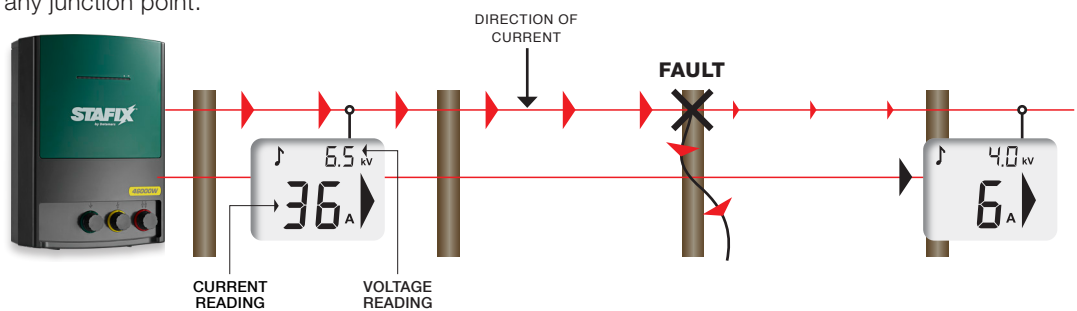
No matter how good an energizer is, if the fence line is badly insulated, has shorts or is poorly earthed, it will perform well below its optimum. Advances in remote and fault-finding technology mean you can quickly locate and fix faults on your fence with a minimum of fuss.



# Fault finding explained

## How to use

Start near the energizer's lead-out wires with your Stafix Remote with Fault Finder or your Stafix Fault Finder. Move down the fence line following the arrow away from the energizer. Take readings at regular intervals and at any junction point.



The previous current reading is shown briefly in the top right corner of the screen so that you can compare readings. If the current reading suddenly falls, you have gone past a fault. Retrace your steps to find the fault. Note that after a few seconds the previous current reading will be replaced with the present voltage reading (kV).



## Remote with Fault Finder

- Quickly and easily locates faults along the fence line
- Large back-lit display
- Displays current, voltage and current direction simultaneously
- Displays previous current reading to compare values
- Audible current indicator
- Convenient belt clip
- Insulated, rugged, water resistant case
- Replaceable 9 V battery
- Low battery warning system
- Automatic energizer polarity detection
- Fault finding option can be used with all energizers
- Turns compatible Stafix energizer on or off from anywhere along the fence line
- 1 year warranty.\*

880 0000-509 EA 55048035



## Fault Finder

- Quickly and easily locates faults along the fence line
- Large back-lit display
- Displays current, voltage and current direction simultaneously
- Displays previous current reading to compare values
- Audible current indicator
- Convenient belt clip
- Insulated, rugged, water resistant case
- Replaceable 9 V battery
- Low battery warning system
- Automatic energizer polarity detection
- Can be used with all energizers
- 1 year warranty.\*



880 0000-340 EA 55048036

## OTHER TOOLS



## Digital Voltmeter

- Enables accurate testing of fence and energizer earth system
- Earth probe provides accurate fence to ground voltage measurements
- Readings from 200 V to 9,900 V in 100 V increments
- Rugged design
- Automatic On/Off
- Replaceable 9 V battery with a life of up to 18 months
- 1 year warranty.\*

880 0000-268 EA 55048038



## Fence Alert™

- Warning light begins flashing when voltage is too low
- Visible up to 1.5 km away
- Rugged impact and water resistant case
- Can be used on any type of electric fence including steel wire and portable poli products
- Works with all energizers
- No ground wires or external power sources required
- Battery life 5 years on standby or up to 2 weeks of continuous flashing
- Two preset voltage triggers can be selected
- Replaceable CR2032 lithium button cell battery
- 1 year warranty.\*

880 0000-934 EA 55048037



## Lite Tester

- Handy, pocket-sized unit for testing general fence condition
- Shows if fence is live and measures approximate voltage
- Readings from 2,000 V to 6,000 V in 1,000 V increments
- Easy to read voltage markings
- No battery required
- 1 year warranty.

880 0004-441 EA 55048039





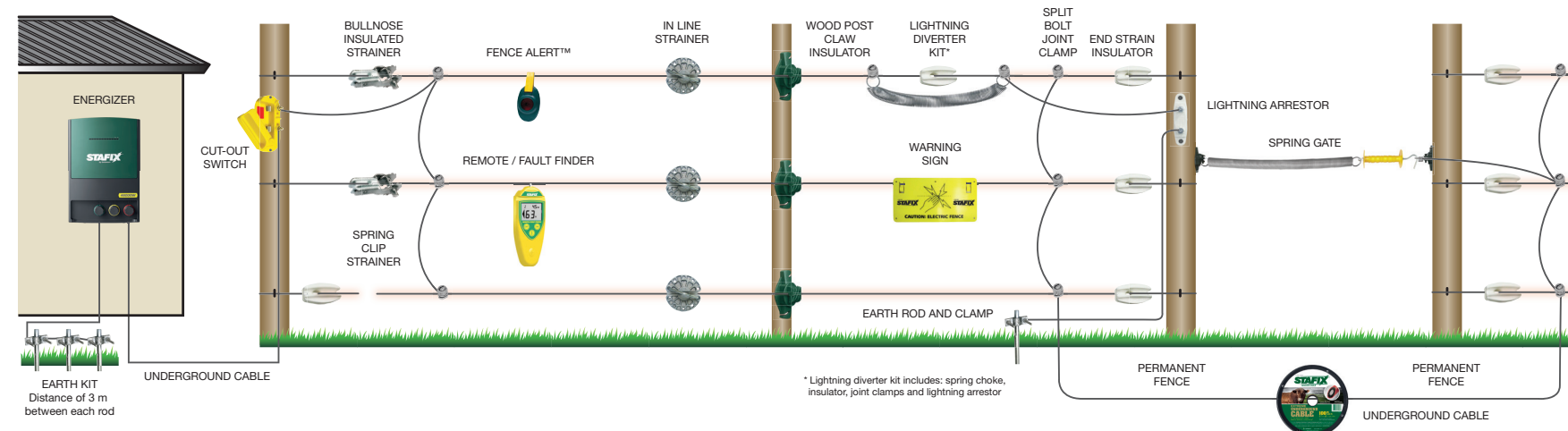
# Permanent Electric Fencing

**A flexible, durable and economical fencing solution. Easy to install and operate with less maintenance.**

It is also a safer fencing solution for your stock. Animal contact with the fence is reduced and it's less likely to injure should a fence be breached.

## Permanent Electric Fence System

These products are recommended to ensure top performance of your permanent electric fence system. Diagram is an example only. For more details on permanent electric fencing design visit [www.stafix.com/resources](http://www.stafix.com/resources).



## CHECKLIST

Do you have:

- ☐ Mains or Unigizer™
- ☐ Earth kit
- ☐ Cut-out switches
- ☐ Fence alert(s)
- ☐ Remote/Fault Finder
- ☐ Wire strainers
- ☐ Post insulators
- ☐ Lightning diverter kit\*
- ☐ Warning sign(s)
- ☐ Joint clamps
- ☐ End strain insulators
- ☐ Underground cable
- ☐ Gate hardware



# Insulators

Stafix insulators are reliable, strong and UV stabilised for long life.  
All Stafix insulators come with a 10 year warranty.

## WOOD POST INSULATORS



WOOD POST CLAW INSULATOR

- Rugged claw design
- UV stabilised for long life
- Unique staple guides
- Twin spark guards prevent arcing and increased distance from wire to post reduces risk of leakage
- Suitable for up to 4 mm (8 ga) wire, poliwire or braid.

880 0000-257 PK 25    55048073  
880 0000-949 PK 125    55048074  
880 0001-668 PK 200  
880 0001-191 Black CT 6,000



WOOD POST PINLOCK INSULATOR

- Rugged pinlock design
- UV stabilised for long life
- Unique staple guides
- Twin spark guards prevent arcing and increased distance from wire to post reduces risk of leakage
- Suitable for up to 4 mm (8 ga) wire, poliwire or braid
- High strength pinlock, conveniently allows easy removal of wires.

880 0000-507 PK 25    55048075  
880 0000-274 PK 125    55048076  
880 0002-390 CT 200

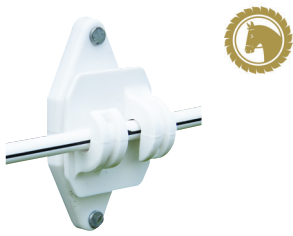


WOOD POST STAPLE ON INSULATOR

- Ideal for smaller farms
- UV stabilised for long life
- Single piece moulding for easy application
- Suitable for up to 2.5 mm (12.5 ga) wire.

Includes diamond point staple.

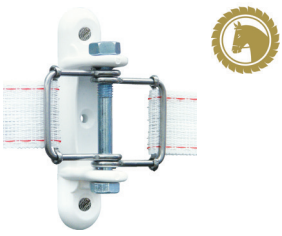
880 0000-729 PK 50    55048083



WOOD POST JUMBO CLAW INSULATOR

- Use with up to 8 mm rope, braid, or electrified sighter wire
- UV stabilised for long life
- Large spark guard prevents arcing and increased distance from wire to post reduces risk of leakage.

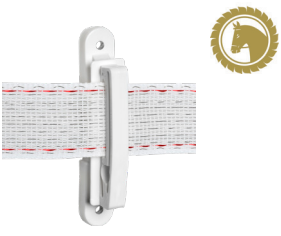
880 0000-317 PK 25    55108735



WIDE TAPE CORNER/ END INSULATOR

- Can be used as a corner or end strain insulator
- Can be used to tension tape
- Use with tape up to 40 mm
- UV stabilised for long life.

880 0000-662 PK 2    55108733



WOOD POST WIDE TAPE INSULATOR

- Use with up to 40 mm wide tape, rope, braid or electrified sighter wire
- UV stabilised for long life.

880 0004-237    55108737



WOOD POST NAIL ON INSULATOR

- Ideal for smaller farms
- UV stabilised for long life
- Easy to install.

Includes 75 mm twisted galvanised nail.

880 0000-318 PK 75    55048084



WOOD POST PORCELAIN DRIVE SCREW INSULATOR

- High quality, long life porcelain
- White glaze finish
- 41 mm diameter.

Includes drive screw assembly.

880 0004-191 PK 20    55049730  
880 0004-207 CT 200    55055838



UNIVERSAL Y-POST PINLOCK INSULATOR

- Suitable for use with most steel posts including JIO Star™, JIO MaxY™ and standard Y-posts
- Ergonomic twin-pin design for fast and easy attachment
- Pinlock design allows for easy wire removal if required
- Suitable for use with most fence wires including sighter wire, up to 8 mm
- UV stabilised for long life
- Increased size provides superior strength and twin spark guards prevent arcing.

880 0000-485 PK 25    55154209  
880 0000-468 PK 125    55154210



Y-POST PINLOCK INSULATOR

- Rugged self locking, tapered pins for easy removal of wires
- UV stabilised for long life
- Suitable for most sizes of fence wire
- Spark guard prevents arcing and increased distance from wire to post reduces risk of leakage.

880 0000-407 PK 25    55048082  
880 0000-667 PK 125    55049285



Y-POST WIDE TAPE INSULATOR

- Use with tape up to 40 mm, rope, braid or electrified sighter wire
- UV stabilised for long life
- Spark guard prevents arcing and increased distance from wire to post reduces risk of leakage.

880 0000-435 PK 25    55121414



STEEL POST INSULATORS



POST CAP TOPPER

- Side and top fixing options for tape up to 40 mm, poliwire, rope, braid or electrified sighter wire
- UV stabilised for long life
- Easily attaches to T and Y-posts.

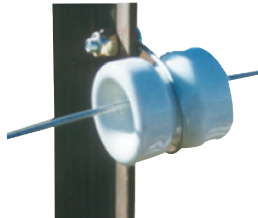
880 0000-579 PK 10 55108739



PORCELAIN BOBBIN INSULATOR

- High quality, long life porcelain
- White glaze finish
- 41 mm diameter.

880 0004-197 PK 10 55049729



PORCELAIN BOLT ON INSULATOR

- High quality, long life porcelain
- White glaze finish.

Includes bolt on assembly.

880 0001-972 PK 20 55049731  
880 0002-070 CT 200 55055839

INSULTUBE



INSULTUBE

- Economical insulator fastened with staples (staples not included)
- Available pre-cut for convenience.

880 0001-185 4/9 mm x 12 m Coil 55048094  
880 0000-359 6/12 mm x 12 m Coil 55048096

END STRAIN INSULATORS



END STRAIN INSULATOR WHITE (HEAVY DUTY)

- Reinforced glass filled polymer for maximum strength
- Suitable for high strain use
- Superior UV stabilisation for long life
- Deep grooves hold wire in place and prevent twisting
- Long leakage path prevents arcing
- Use with most sizes of fence wire.

880 0000-714 PK 25 55048070



END STRAIN INSULATOR GREEN

- Suitable for medium strain use
- UV stabilised for long life
- Deep grooves hold wire in place and prevent twisting
- Long leakage path prevents arcing
- Use with most sizes of fence wire.

880 0001-040 PK 25 55048071

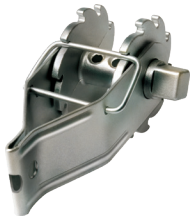


END STRAIN INSULATOR PORCELAIN

- Suitable for high strain use
- High quality long life porcelain
- Deep grooves hold wire in place and prevent twisting under tension
- White glaze finish.

880 0000-956 PK 10 556048072

UNINSULATED STRAINER



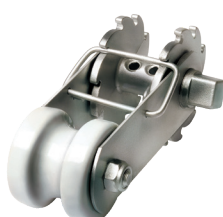
SPRING CLIP STRAINER

- Suitable for high strain use
- Spring clip design for easy tensioning
- Rust resistant
- Galvanised frame with aluminium spool
- Rugged and easy to use.

880 0000-060 PK 10

55048128

INSULATED STRAINERS



PORCELAIN INSULATED STRAINER

- Suitable for high strain use
- Spring clip design for easy tensioning
- Porcelain insulator for strength and durability
- Rust resistant
- Galvanised frame with aluminium spool
- Rugged and easy to use.

880 0000-131 PK 10

55134391

Strainers

All Stafix strainers come with a 1 year warranty.



INSULATED STRAINERS



BULLNOSE INSULATED STRAINER

- Suitable for high strain use
- Spring clip design for easy tensioning
- Heavy duty insulator protects against arcing
- Rust resistant
- Galvanised frame with aluminium spool
- UV stabilised for long life
- Rugged and easy to use.

880 0000-001 PK 10 55108242



PORCELAIN BULLNOSE INSULATED STRAINER

- Suitable for high strain use
- Spring clip design for easy tensioning
- Heavy duty porcelain insulator for strength, durability and protection against arcing
- Fire and rust resistant
- Galvanised frame with aluminium spool
- Rugged and easy to use.

880 0000-030 PK 10 55135018



Cable and Specialised Wire

Durable, reliable and UV stabilised for long life. We provide a 1 year warranty on all our cable and specialised wire products.

CABLE



EXTREME 2.7 MM UNDERGROUND CABLE

- Ideal for large properties with high powered energizers
- 2.7 mm (12 ga) aluminium coated steel for extreme conductivity
- 3 x more conductive than 2.5 mm (12.5 ga) Premium Underground Cable
- 8 x more conductive than 1.6 mm (16 ga) Underground Cable
- Use with Stafix Joint Clamps
- Resistance of 11.5 ohms / km
- Easy to strip with soft steel core for greater flexibility
- Delivers more power over long distances.

880 0001-548 50 m Spool  
880 0000-513 100 m Spool 55048092  
880 0000-352 500 m Spool 55146262



PREMIUM 2.5 MM UNDERGROUND CABLE

- Suitable for all properties
- 2.5 mm (12.5 ga) galvanised steel for greater conductivity
- 3 x more conductive than 1.6 mm (16 ga) Underground Cable
- Use with Stafix Joint Clamps
- Resistance of 35 ohms / km
- Easy to strip with soft steel core for greater flexibility.

880 0000-941 25 m Spool 55048089  
880 0000-511 50 m Spool 55048090  
880 0000-785 100 m Spool 55048091



1.6 MM UNDERGROUND CABLE

- Ideal for small properties with low powered energizers
- 1.6 mm (16 ga) galvanised steel
- Use with Stafix Joint Clamps
- Resistance of 90 ohms / km
- Easy to strip with soft steel core for greater flexibility.

880 0000-222 25 m Spool 55048086  
880 0001-165 50 m Spool 55048087  
880 0000-606 100 m Spool 55048088

WIRE



ALUMINIUM COATED LEAD-OUT WIRE

- Ideal for long lead-out and high powered energizer installations
- 2.7 mm (12 ga) aluminium coated steel for extreme conductivity
- 3 x more conductive than standard 2.5 mm (12.5 ga) galvanised wire
- Resistance of 11.5 ohms / km
- Ideal for use in coastal and other corrosive environments.

880 0000-051 1,000 m Spool 55127473



ELECTRIFIED SIGHTER WIRE

- High tensile wire coated in a conductive carbon compound to deliver low voltage shocks
- Highly visible to help prevent animal entanglement.

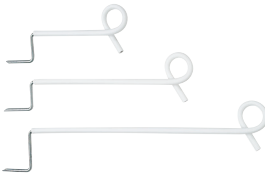
880 0000-763 White 400 m 55113425



Outriggers

Stafix Outriggers are backed by a 1 year warranty. They help preserve the life of existing conventional fences. Simply attach Outriggers and run an electrified wire through them to keep stock off the fence.

WOOD POST OUTRIGGERS



SIDE FIXING

- Galvanised spring steel construction
- UV stabilised for long life
- Available lengths:
  - 150 mm
  - 270 mm
  - 400 mm.

880 0001-184 (150 mm PK 5)  
880 0000-020 (270 mm PK 5)  
880 0002-463 (400 mm PK 5)

55048132  
55048134  
55048136

TOP FIXING

- Galvanised spring steel construction
- UV stabilised for long life
- Available lengths:
  - 150 mm
  - 270 mm
  - 400 mm.

880 0002-126 (150 mm PK 5)  
880 0000-107 (270 mm PK 5)  
880 0002-213 (400 mm PK 5)

55048131  
55048133  
55048135

DOUBLE ENDED

- Galvanised spring steel construction
- UV stabilised for long life.

880 0000-106 (860 mm PK 10)

55048137

WOOD POST OUTRIGGERS



WOOD POST FIBREGLASS OUTRIGGER WITH CLIP

- 300 mm wood post fiberglass outrigger
- 10 mm diameter, UV stabilised, silicon bonded fiberglass.

Includes stainless steel spring clip.

880 0000-494 (PK 10)

55049738

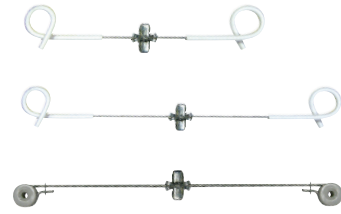
STEEL Y-POST OUTRIGGERS



SINGLE QUICK-LOCK™ OUTRIGGER

- Smart bracket design for quick and easy installation
- 6 mm spring steel construction
- Zinc plated to withstand harsh conditions
- Porcelain versions contain a high quality long life porcelain bobbin
- UV stabilised for long life.

880 0000-109 (200 mm PK 5)  
55005693  
880 0000-097 (300mm PK 5)  
55005694  
880 0000-083 (300mm Porcelain PK 5)  
55005697

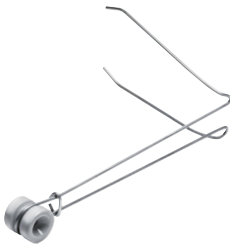


DOUBLE QUICK-LOCK™ OUTRIGGER

- Smart bracket design for quick and easy installation
- 6 mm spring steel construction
- Zinc plated to withstand harsh conditions
- Porcelain versions contain a high quality long life porcelain bobbin
- UV stabilised for long life.

880 0000-110 (400mm PK 5)  
55005695  
880 0000-115 (600mm PK 5)  
55005696  
880 0000-116 (600mm Porcelain PK 5)  
55005698

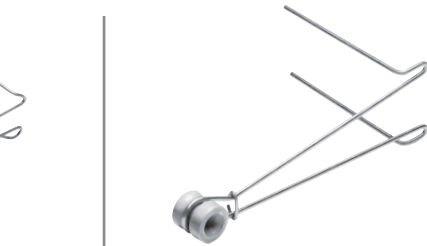
WIRE OUTRIGGERS



PORCELAIN WIRE CURLON

- High quality long life porcelain bobbin
- 4 mm galvanised spring steel construction for superior strength
- C-Clip design provides extra insulator stability.

880 0004-193 CT 50



STANDOFF GPSO 300 MM X 5.6 MM

- 300 mm standoff suited for use on concrete posts
- 41 mm porcelain bobbin insulator
- 5.6 mm galvanised spring steel construction for superior strength.

55049283

880 0004-192 CT 50

55049736



PINLOCK WIRE OUTRIGGERS

- Ideal for installing electric fencing onto existing non-electrified fences
- Constructed from high tensile galvanised steel
- UV stabilised pinlock insulator for easy wire insertion and removal.

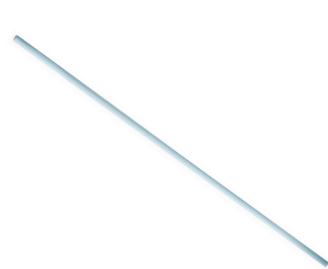
880 0000-525 CT 50

55049737

Semi-Permanent Posts

All Stafix semi-permanent posts and accessories come with a 1 year warranty.

FIBREGLASS POST



FIBREGLASS POST

- UV stabilised, silicon bonded fiberglass rods
- Available in a range of sizes.

880 0000-072 13 mm x 1.5 m PK 10  
55121680  
880 0000-104 13 mm x 2.0 m PK 10  
55121682  
880 0004-198 10 mm x 1.2 m PK 50  
55049739  
880 0004-199 10 mm x 1.5 m PK 50  
55049740

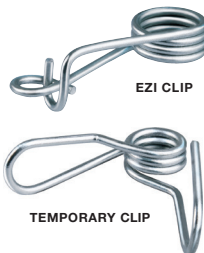
POST ACCESSORIES



DRIVE CAP

- Use with 10 mm and 13 mm fiberglass posts.

880 0000-692 PK 1  
55201522



FIBREGLASS POST CLIPS

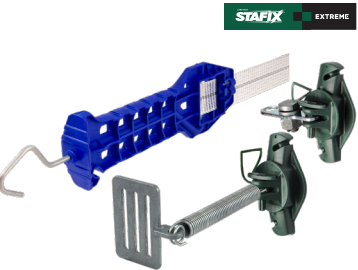
- Use with 10 or 13 mm fiberglass posts.

880 0000-555 10 mm Temp Clip PK 50  
55146115  
880 0000-252 10 mm Ezi Clip PK 50  
55146117  
880 0000-858 13 mm Ezi Clip PK 50  
55135021

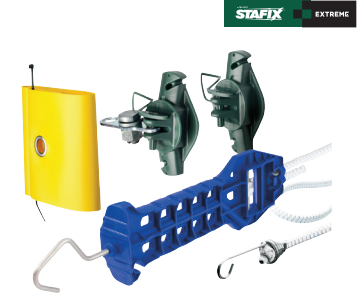


# Gate Hardware

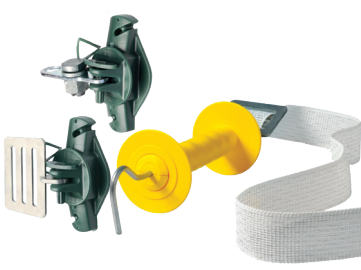
All Stafix gate products come with a 1 year warranty.



**REFLECTIVE TAPE GATE**  
880 0004-369 PK 1 55187891  
5 m Reflective Tape included



**REFLECTIVE BUNGY GATE DUAL PURPOSE**  
880 0004-370 PK 1 55187890  
7 m reflective bungy included

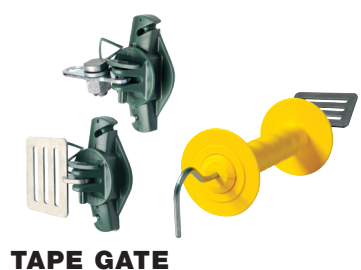


**TAPE GATE**  

- Electrifies gateways up to 5 m wide
- Versatile and easy to install
- Fully insulated, heavy duty handle with protective guards and non-slip grip
- Designed for maximum visibility with 40 mm wide tape
- Tape contains 10 stainless steel strands for high conductivity.

Includes: heavy duty insulated handle, 2 x Wood Post Pinlock Insulators, buckle, activator and 5 m of Premium Gate Tape.

880 0000-618 PK 1 55048107



**TAPE GATE HARDWARE KIT**  

- For custom length gateways
- For use with Stafix Premium Gate Tape
- Versatile and easy to install
- Fully insulated, heavy duty handle with protective guards and non-slip grip.

Includes: heavy duty insulated handle, 2 x Wood Post Pinlock Insulators, buckle and activator (excludes tape).

880 0002-334 PK 1 55048108

## HANDLES



**HEAVY DUTY GATE BREAK HANDLE**  

- Non-slip insulated grip
- High density UV stabilised polyethylene for long life
- High tensile galvanised spring
- Heavy duty, rugged body with large protective guards.

880 0000-635 Yellow CT 20 55048115  
880 0000-467 White CT 20 55048114



**GATE BREAK HANDLE**  

- Non-slip insulated grip
- High density UV stabilised polyethylene for long life
- Replaceable heavy duty galvanised spring.

880 0000-694 PK 6 55048102  
880 0001-310 Replacement Spring PK 10

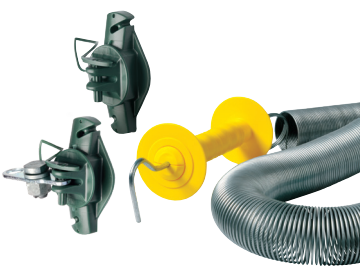


**SPRING GATE WHITE**  

- Electrifies gateways up to 5 m wide
- Versatile and easy to install
- Fully insulated, heavy duty handle with protective guards and non-slip grip
- Highly visible powder coated white rust resistant spring.

Includes: heavy duty insulated handle, 2 x Wood Post Pinlock Insulators, activator and 5 m white spring.

880 0000-293 PK 1 55048106  
880 0000-505 5 m Replacement Spring White PK 1



**SPRING GATE**  

- Electrifies gateways up to 5 m wide
- Versatile and easy to install
- Fully insulated, heavy duty handle with protective guards and non-slip grip
- Galvanised rust resistant spring.

Includes: heavy duty insulated handle, 2 x Wood Post Pinlock Insulators, activator and galvanised spring.

880 0000-144 (5 m wide) PK 1 55048105  
880 0000-696 (5 m Replacement Spring) PK 1 55178241



**BUNGY GATE**  

- Electrifies gateways and races up to 11 m wide
- Versatile and easy to install
- Fully insulated handle with protective guards and non-slip grip
- Bungy Cord with 4 stainless steel strands provides extreme stretch, high conductivity and maximum shock exposure.

Includes: insulated handle, 2 x Wood Post Pinlock Insulators, activator, galvanised hook, High Visibility Flag and Bungy Cord.

880 0000-138 (3.5 m - 7 m wide) 55137661  
880 0000-959 (5.5 m - 11 m wide)



**COMPRESSION GATE BREAK HANDLE**  

- High tensile, heavy duty spring compresses under tension, preventing over-stretching
- Non-slip insulated grip
- High density UV stabilised polyethylene for long life
- Heavy duty, rugged body with large protective guards.

880 0000-703 CT 20 55048103



**ZAMMR HANDLE**  

- Convenient, multi-purpose handle
- Use as a live hook or an insulated hook in temporary fencing, or as a gate break handle
- Versatile – connect temporary fence wire, tape or bungy
- Strong stainless steel backbone for high conductivity and corrosion resistance
- Single piece over-mould ensures a fully insulated handle
- Durable design for use in the toughest conditions.

880 0000-193 CT 10 55142562






**DUAL PURPOSE GATE HANDLE**  




- Ideal for use in high traffic gateways
- Robust flat profile
- Strong stainless steel backbone for high conductivity and corrosion resistance
- Versatile – fasten tape or bungy through the simple knot-free design
- Unique hook design enables a smooth and secure connection to an activator plate.

880 0004-368 CT 10 55187889



OTHER GATE PRODUCTS

		
<b>GATE ACTIVATOR</b> <ul style="list-style-type: none"><li>- For use with tape, spring and bungy gates</li><li>- Zinc Joint Clamp for easy connection of wires</li><li>- Unique swivelling activator plate.</li></ul>	<b>BUNGY CORD / BUNGY HOOK</b> <ul style="list-style-type: none"><li>- Heavy duty electrified shock cord with supreme elasticity</li><li>- 4 stainless steel wires cross over 10 x per cm for maximum conductivity</li><li>- Suitable for all livestock</li><li>- UV stabilised for long life</li><li>- Galvanised hook for bungy gate anchor.</li></ul>	<b>HIGH VISIBILITY FLAG</b> <ul style="list-style-type: none"><li>- For use on any gateway including tape, spring or bungy.</li></ul>
880 0000-770 PK 10	55048116 880 0000-281 Bungy Cord 50 m Spool 55048100 880 0001-055 Bungy Hook	880 0002-157 PK 10 55008535

		
<b>TAPE GATE BUCKLE</b> <ul style="list-style-type: none"><li>- For use with Premium Gate Tape.</li></ul>	<b>PREMIUM GATE TAPE</b> <ul style="list-style-type: none"><li>- 40 mm wide tape</li><li>- 10 strands of highly durable stainless steel wire for greater conductivity</li><li>- Highly visible.</li></ul>	<b>REFLECTIVE GATE TAPE AND BUNGY CORD</b> <ul style="list-style-type: none"><li>- For high visibility and superior safety across gateways</li><li>- Reflective strands woven through the centre</li><li>- Tape includes 10 stainless steel strands for greater conductivity</li><li>- Bungy cord includes a multi strand core and double sheath for UV resistance and long life.</li></ul>
880 0000-681 PK 10	55048109 880 0000-710 White 50 m 880 0000-458 White 200 m	55048048 55050733 880 0004-372 Reflective Bungy 50 m Spool 55187893

General Accessories

All Stafix general accessories come with a 1 year warranty.

		
<b>CUT-OUT SWITCH</b> <ul style="list-style-type: none"><li>- Use to isolate sections of electric fence with minimal disruption to your farm</li><li>- 2 stainless steel contacts for positive connection</li><li>- UV stabilised for long life</li><li>- Highly visible on/off position</li><li>- Fits securely onto post.</li></ul>	<b>LIGHTNING PROTECTION</b> <b>LIGHTNING DIVERTER KIT</b> <ul style="list-style-type: none"><li>- Kit contains components needed to block and divert most voltage spikes from lightning strikes.</li></ul> <p>Includes: spring choke, insulator, joint clamps and lightning arrestor.</p>	<b>JOINT CLAMPS</b> <b>HEAVY DUTY CLAW JOINT CLAMP</b> <ul style="list-style-type: none"><li>- Use to create electrical connections between wires</li><li>- Galvanised construction for superior rust resistance</li><li>- Claw design allow multiple connecting wires</li><li>- Suitable for wire up to 4 mm (8 ga).</li></ul>
880 0000-012 CT 10	55048118 880 0000-176 PK 1 55048040 880 0001-058 Replacement Lightning Arrestor PK 1	880 0000-048 PK 20 55143239

	
<b>SPLIT BOLT JOINT CLAMP</b> <ul style="list-style-type: none"><li>- Use to create electrical connections between wires</li><li>- Solid zinc for superior corrosion resistance</li><li>- Ideal for coastal or other harsh environments</li><li>- Suitable for wire up to 2.7 mm (12 ga).</li></ul>	<b>FLOOD PROTECTION</b> <b>FLOOD GATE CONTROLLER</b> <ul style="list-style-type: none"><li>- Limits energy loss from heavy growth or flooding</li><li>- Fully sealed from insects and the environment</li><li>- Ideal for use near creeks, river beds and areas prone to flooding.</li></ul>
880 0000-172 PK 20 55143240	880 0000-961 PK 1 55049727



SIGN

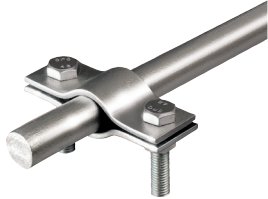


WARNING SIGN

- Clear warning for safety
- Signs may be required by law – refer to your local bylaws for more information.

880 0000-087 CT 100

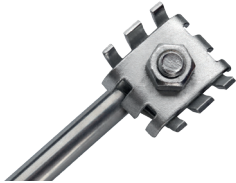
EARTHING



EARTH CLAMP

- Solid galvanised construction.

880 0002-192 Galvanised Earth Clamp PK 3  
55048125



SUPER EARTH KIT

- Designed to improve soil conductivity around earth rod in dry or non-conductive soils
- Stainless steel construction for enhanced corrosion resistance.

Includes: 1.2 m stainless steel rod, stainless steel earth clamp and Bentonite Salt Solution.

In non-conductive soils, 1 x Bentonite Earth Kit is equivalent to up to 3 standard earth rods.

880 0004-194 PK 1

55049728





# Temporary Electric Fencing

**Helps increase production through providing a quick, easy and inexpensive way to subdivide paddocks.**

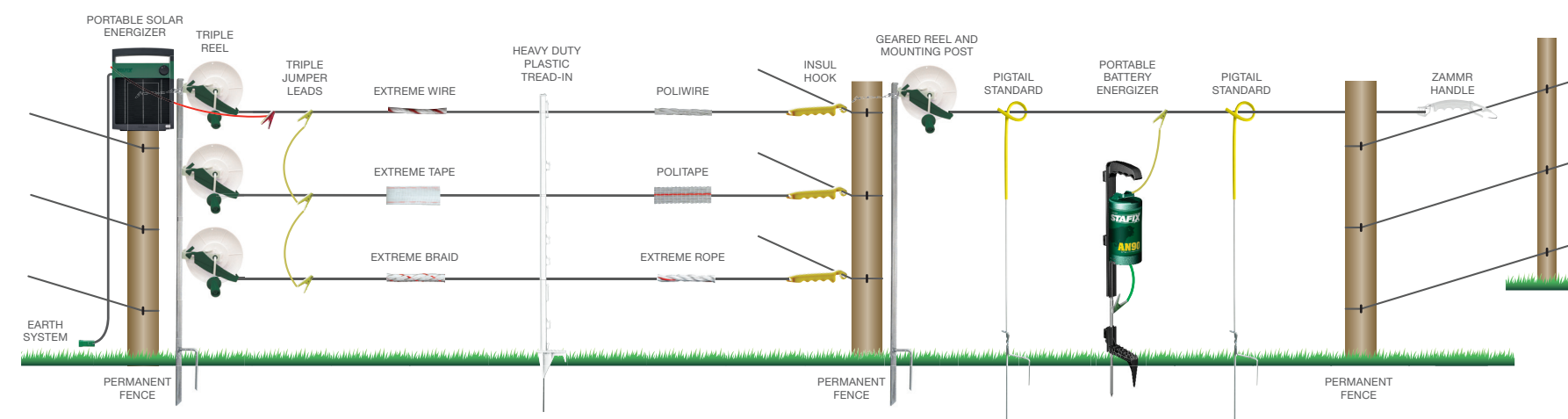
This portable fencing solution gives you the versatility to strip graze, make temporary paddocks or pens and protect trees and crops from damage by stock.



## Temporary Electric Fence System

Diagram is an example only. For more details on temporary fencing design visit [www.stafix.com/resources](http://www.stafix.com/resources).

Strip grazing for controlled rotational grazing is an excellent method to improve pasture utilisation. For best early re-growth of pasture, back-fencing of areas already grazed is recommended. Generally, temporary fences are moved daily. The distance moved depends on the number of animals being grazed and the quality and quantity of pasture available. These products are recommended to ensure top performance of your temporary electric fence system.



## CHECKLIST

### Do you have:

- ✓ Battery or solar powered Energizer
- ✓ Reel(s)
- ✓ Tape, wire, braid or rope
- ✓ Tread-ins or pigtail standards
- ✓ Insul hooks or ZAMMR handles
- ✓ Jumper leads
- ✓ Mounting post(s)



# Tape, Wire, Braid and Rope Products

Select between the Extreme, Premium and Poli range depending on your temporary fence needs. All Stafix poli products are UV stabilised for long life and come with a 1 year warranty.



The Stafix **EXTREME** range provides the ultimate in conductivity and strength for more demanding professional livestock control applications. Up to 6 tinned copper strands for extreme shock power.




The Stafix **PREMIUM** range provides greater conductivity and strength for demanding professional livestock control applications. Up to 10 stainless steel strands for greater shock power.

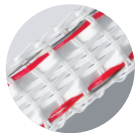


The Stafix **POLI** range provides effective conductivity and strength for professional livestock control applications. 6 stainless steel strands for shock power.

## TAPE 12 mm

### EXTREME TAPE 12 MM

  
880 0000-799 White 200 m Roll 55048053  
880 0000-522 White 400 m Roll 55048054

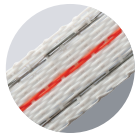


- 6 tinned copper strands
- 106 x more conductive than standard Politape
- Increased shocking and stopping power, ideal for long lengths of temporary and semi-permanent fence
- Heavy duty tape, tightly woven for superior strength
- 12 mm width with white and red weave for ultimate visibility
- UV stabilised for long life.

RESISTANCE (OHMS / KM)	VOLTAGE AT START OF FENCE (V)	VOLTAGE AT 100 M (V)	VOLTAGE AT 500 M (V)	VOLTAGE AT 1 KM (V)
65	8,000	7,900	7,500	7,100

### PREMIUM SUPER 8 TAPE 12 MM

880 0001-043 White 200 m Roll 55048045  
880 0001-894 White 400 m Roll 55048047

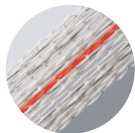


- 8 interwoven stainless steel strands
- 1.3 x more conductive than standard Politape
- Ideal for temporary fencing and strip grazing
- Tightly woven for superior strength
- 12 mm width with white and red weave for high visibility
- UV stabilised for long life.

5,200	8,000	3,800	1,200	700
-------	-------	-------	-------	-----

### POLITAPE 12 MM

  
880 0001-036 White 200 m Roll 55048042  
880 0002-230 White 400 m Roll 55048044



- 6 stainless steel strands
- Ideal for temporary fencing and strip grazing
- Tightly woven for superior strength
- 12 mm width with white and orange weave for high visibility
- UV stabilised for long life
- Available in white or orange.

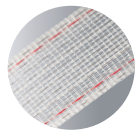
6,900	8,000	3,200	950	500
-------	-------	-------	-----	-----

## TAPE 40 mm

### EXTREME TAPE 40 MM



880 0000-575 White 200 m Roll 55108727



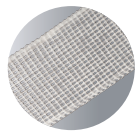
- 5 tinned copper strands
- 5 stainless steel strands
- 99 x more conductive than standard Politape
- Ideal for long distance, permanent and semi-permanent fencing
- 40 mm width with white and orange weave for ultimate visibility
- UV stabilised for long life.

RESISTANCE (OHMS / KM)	VOLTAGE AT START OF FENCE (V)	VOLTAGE AT 100 M (V)	VOLTAGE AT 500 M (V)	VOLTAGE AT 1 KM (V)
70	8,000	7,900	7,500	7,000

### PREMIUM TAPE 40 MM



880 0000-710 White 50 m Roll 55048048  
880 0000-468 White 200 m Roll 55050733




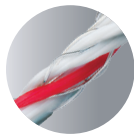
- 10 stainless steel strands
- 1.7 x more conductive than standard Politape
- Ideal for permanent and semi-permanent fencing or high traffic areas such as gateways
- 40 mm width for high visibility
- UV stabilised for long life
- Available in white or orange.

4,000	8,000	4,400	1,600	900
-------	-------	-------	-------	-----

## WIRE

### EXTREME WIRE

  
880 0000-799 White 200 m Roll 55048055  
880 0000-522 White 400 m Roll 55048056

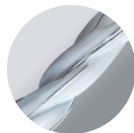


- 6 tinned copper strands
- 105 x more conductive than standard Poliwire
- Increased shocking and stopping power, ideal for long lengths of temporary and semi-permanent fence
- UV stabilised for long life
- White with red weave for ultimate visibility.

RESISTANCE (OHMS / KM)	VOLTAGE AT START OF FENCE (V)	VOLTAGE AT 100 M (V)	VOLTAGE AT 500 M (V)	VOLTAGE AT 1 KM (V)
65	8,000	7,900	7,500	7,100

### POLIWIRES

  
880 0000-515 White 200 m Roll 55048049  
880 0000-897 Orange 500 m Roll 55048052  
880 0000-358 White 500 m Roll 55048051




- 6 stainless steel strands
- An economical choice for temporary fencing and strip grazing
- UV stabilised for long life
- Available in white or orange.

6,800	8,000	3,400	1,000	550
-------	-------	-------	-------	-----

## BRAID

### EXTREME BRAID 7 MM




  
880 0001-876 White 200 m Roll 55108729



- 4 tinned copper strands for ultimate conductivity
- 4 stainless steel strands for ultimate strength
- 68 x more conductive than standard Poliwire
- Increased shocking and stopping power, ideal for long lengths of temporary and semi-permanent fence
- White with red weave for ultimate visibility
- UV stabilised for long life.

RESISTANCE (OHMS / KM)	VOLTAGE AT START OF FENCE (V)	VOLTAGE AT 100 M (V)	VOLTAGE AT 500 M (V)	VOLTAGE AT 1 KM (V)
100	8,000	7,900	7,300	6,700

### EXTREME BRAID 3 MM

  
880 0001-671 200 m Roll 55048057  
880 0004-195 400 m + 100 m Roll 55049284




- 4 tinned copper strands
- 72 x more conductive than standard Poliwire
- Increased shocking and stopping power, ideal for long lengths of temporary and semi-permanent fence
- White with red weave for ultimate visibility
- UV stabilised for long life.

95	8,000	7,900	7,300	6,700
----	-------	-------	-------	-------

## ROPE

### EXTREME ROPE 6 MM



  
880 0000-321 White 200 m Roll 55108725



- 3 tinned copper strands
- 3 stainless steel strands
- 52 x more conductive than standard Poliwire
- Ideal for temporary fencing and strip grazing
- 6 mm diameter for greater visibility and strength
- UV stabilised for long life.

RESISTANCE (OHMS / KM)	VOLTAGE AT START OF FENCE (V)	VOLTAGE AT 100 M (V)	VOLTAGE AT 500 M (V)	VOLTAGE AT 1 KM (V)
130	8,000	7,800	7,100	6,300



Reels

Stafix reels are unrivalled for their reliability and performance. They all feature a rugged, sturdy design. Stafix geared reels are made of high impact polymers and galvanised steel frames and come with a 5 year bobbin UV warranty.



EXTREME GEARED REEL

- Holds 500 m poliwire or 200 m politape
- 3:1 gear ratio with a solid steel crank
- Wire tracking for even wire distribution across the bobbin
- Drag adjustment to prevent over run and tangling
- Isolated power flow through the reel frame
- On/off power switch for fingertip control
- New hook design for enhanced stability on fence or bike
- Hook fits a range of bar widths
- Frame insulated from spool
- UV stabilised materials for long life and durability

880 0004-622



GEARED MEGA REEL

- Holds 1,000 m poliwire or 400 m politape (12 mm)
- 3:1 gear ratio with a solid steel crank
- Frame insulated from spool
- Use with carry handle or on mounting post
- UV stabilised for long life
- Galvanised steel frame
- Rugged steel locking system.

880 0000-545 with ZAMMR Handle EA 55175903



GEARED REEL

- Holds 500 m poliwire or 200 m politape (12 mm)
- 3:1 gear ratio with a solid steel crank
- Frame insulated from spool
- Use with carry handle or on mounting post
- UV stabilised for long life
- Galvanised steel frame
- Rugged steel locking system.

880 0000-344 EA

55050244



EXTREME PRE-WOUND GEARED REEL

- Extreme Geared Reel pre-wound with Extreme Wire, poliwire or politape.
- Comes with ZAMMR Handle.

880 0004-626  
REEL STX EXTREME GEARED+EXTWIRE 400M W/ZAMMR WHI  
880 0004-628  
REEL STX EXTREME GEARED+PTAPE S8 200M W/ZAMMR WHI  
880 0004-630  
REEL STX EXTREME GEARED+PWIRE 6SS 500M W/ZAMMR WHI



PREWOUND GEARED REEL

- Geared Reel pre wound with poliwire, tape (12 mm) or braid
- Comes with ZAMMR Handle.

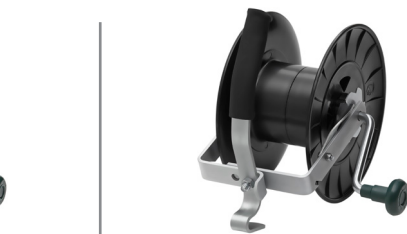
880 0000-953 Premium Super 8 Tape (12 mm) 200 m EA 55175904  
880 0000-462 Poliwire White 500m Ea 55175905



SUPER REEL

- Holds 1,000 m poliwire or 400 m politape (12 mm)
- 1:1 gear ratio
- Frame insulated from spool
- Use with carry handle or on mounting post
- UV stabilised for long life
- Galvanised steel frame
- Rugged steel locking system.

880 0000-238 EA



VALUE REEL

- Holds 500 m poliwire or 200 m politape (12 mm)
- 1:1 gear ratio
- Frame insulated from spool
- Use with carry handle or on mounting post
- UV stabilised for long life
- Galvanised steel frame
- Rugged steel locking system
- Innovative notch frame design for easy and secure fence attachment.

880 0000-243 EA



MINI REEL

- Holds 200 m poliwire or 100 m politape (12 mm)
- 1:1 gear ratio
- Frame insulated from spool
- Use with carry handle or on mounting post
- UV stabilised for long life
- Galvanised steel frame
- Rugged steel locking system.

880 0002-051 EA

55048052

MOUNTING POST

GALVANISED REEL MOUNTING POST

- Sturdy galvanised steel construction.
- Includes: anchor chain.



Example.  
Reels not included



880 0000-482 3 holes EA

55197589





# Temporary Fence Posts

All Stafix temporary fence posts come with a 1 year warranty.

## TREAD-INS



### HEAVY DUTY TREAD-IN

- Designed for maximum strength and versatility
- Suitable for poliwire, tape up to 40 mm or rope and braid up to 8 mm
- 9 positions available in 860 mm fence height (1,060 mm total height);
- UV stabilised for long life
- Rugged "H" profile post
- Galvanised metal spike

880 0000-661 White 1060 mm CT 50  
55048126



### MAUN FENCING PLIERS

- Cut high tensile wire
- 203 mm parallel action, sidecutting pliers
- Plastic covered handle
- 3 year warranty

880 0003-475

55015434

# General Accessories

All Stafix general accessories come with a 1 year warranty.

## LEADS

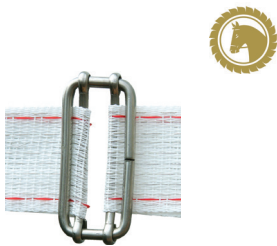


### JUMPER LEADS

- Recommended for ensuring good electrical connections in temporary fencing
- Joint clamps are recommended for permanent electric fencing.

880 0000-672 Single Jumper Lead PK 1  
55048120  
880 0001-666 Triple Jumper Lead PK 1  
55048121

## HANDLES



### WIDE TAPE JOINER 40 MM

- Use to join up to 40 mm wide tape
- Made from stainless steel.

880 0001-825 PK 5

55108731

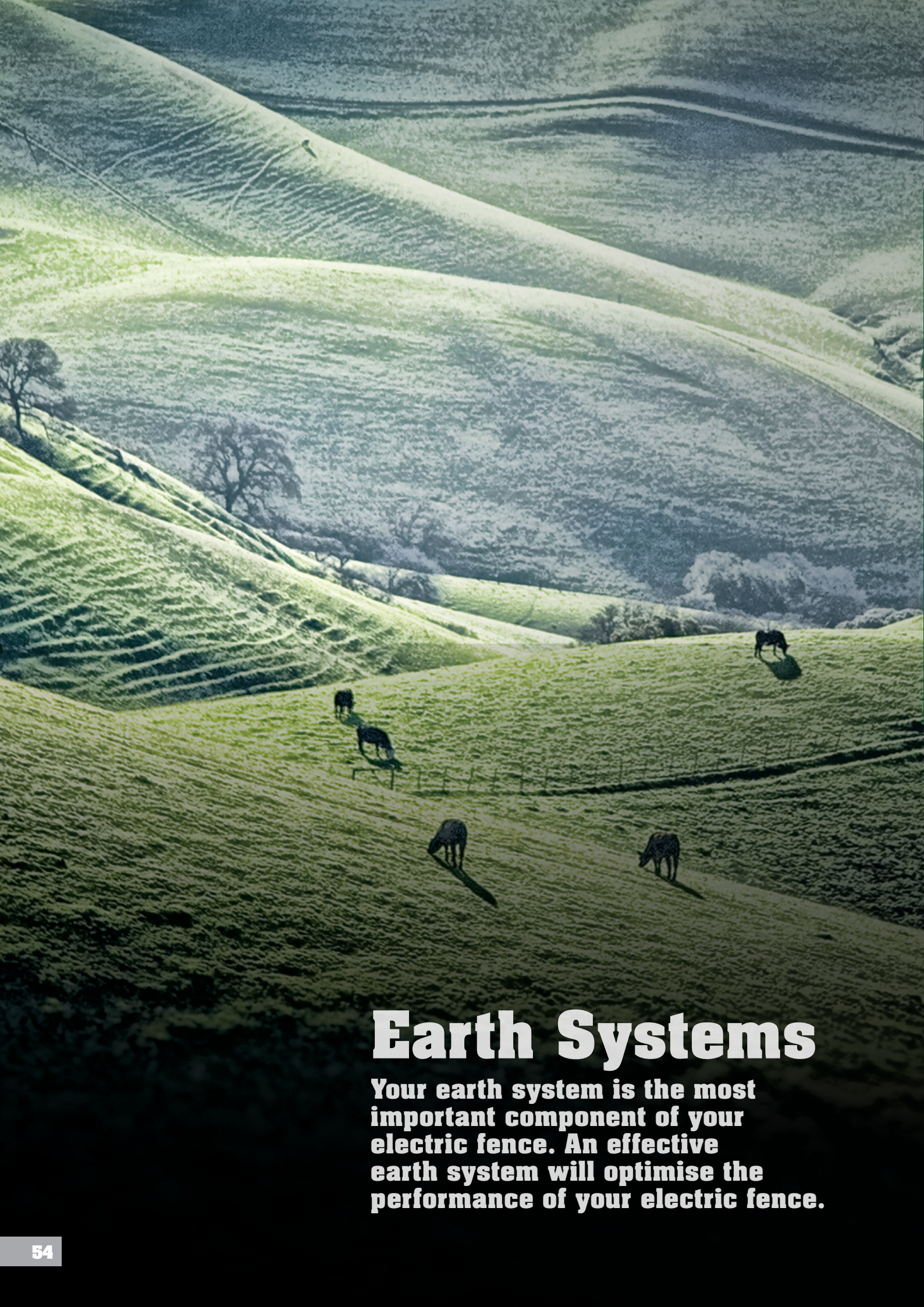
### INSUL HOOK

- Used when an insulated connection is required
- Strong, UV resistant design
- For use in temporary fence application
- Slim design for ease of use.

880 0000-631 PK 10

55048104





# Earth Systems

**Your earth system is the most important component of your electric fence. An effective earth system will optimise the performance of your electric fence.**

## Setting up your Earth System

### Installing your Energizer

Before installing make sure you have read all the instructions provided with your energizer.

#### INDOOR INSTALLATION

Mains, Unigizer™ or battery powered energizer

- Mount out of reach of children and animals
- Mount a mains powered energizer near a power point.

#### OUTDOOR INSTALLATION

Unigizer or battery powered energizer

- Mount out of reach of children and animals
- If necessary, build a protective box or fence around the energizer and battery
- Where possible, connect the energizer to the middle of the fence.

#### SOLAR INSTALLATION

Solar powered energizers

- Mount out of reach of children and animals
- If necessary, build a protective fence around the solar installation
- Where possible, position the energizer and solar panel(s) in the middle of the fence
- Adjust the solar panel(s) to face north in the southern hemisphere and south in the northern hemisphere
- Tilt the solar panel(s) to face the midday sun.

Refer to your product user manual for more information about energizer installations or visit [www.stafix.com/resources](http://www.stafix.com/resources). For further assistance, contact your local Datamars Livestock Territory Manager or Stafix retailer/distributor for advice. You'll find their details online at [www.stafix.com](http://www.stafix.com). Alternatively, refer to the back cover for details of your local Datamars.

### Earthing your Energizer

#### UNDERSTANDING EARTHING

##### What is an earth system?

The earth system consists of a number of earth rods that provide an effective (low resistance) path for the electric current to return to the energizer's earth terminal. Larger energizers with large fence lines require more earth rods.

##### How does earthing work?

For an electric fence to give an electric shock the current produced by an energizer must complete a full circuit. The current leaves the energizer and moves along the fence wires through the animal, into the soil and back to the energizer via the earth system. If the earth system is ineffective the animal will receive an inadequate shock.

##### What factors affect your earth system?

Dry, sandy or non-conductive soil (e.g. volcanic soil) provides an ineffective earthing system. If you have this type of soil, it's a good idea to 1) use additional earth rods or 2) choose a better location for the earth system (such as damp soil) or 3) consider an alternative method of earthing such as the Fence Wire Earth Return.



# Setting up your Earth System

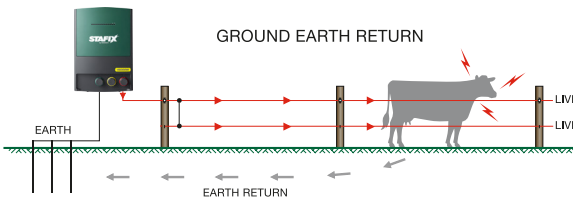
## STEP 1

### CHOOSE THE RIGHT SYSTEM FOR YOU

#### Option 1 – Ground Earth Return

Recommended where soil is conductive. This system is suitable for most moist soils.

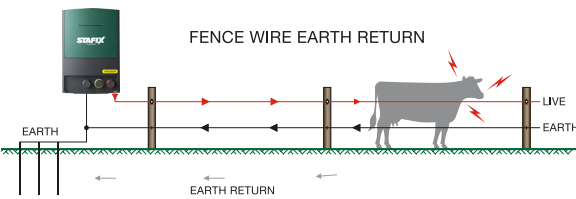
Current flows through the animal and the ground back to the earth rods.



#### Option 2 – Fence Wire Earth Return

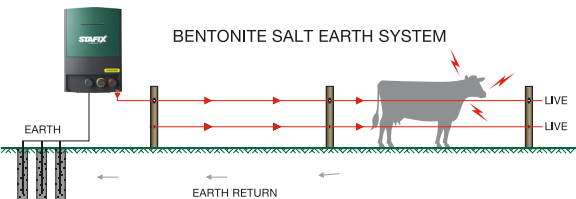
Recommended where soil is not conductive. If the soil is dry, sandy or volcanic it is usually not conductive.

The fence is constructed using both live and earth wires. If the animal touches the live wire, the current flows through the animal and the ground to the earth rods and back to the energizer. If the animal touches the live wire and the earth wire the current flows through the ground and fence earth wire back to the energizer.



#### Option 3 – Bentonite Salt Earth (Australia Only)

A bentonite salt earth system is recommended for extremely dry soil conditions. A mixture of bentonite and salt surrounds each earth rod. The salt attracts moisture and acts as a conductor while the bentonite retains moisture over long periods of time. Stainless steel earth rods are required in order to prevent salt corrosion.



## STEP 2

### SELECT THE SITE FOR YOUR EARTH SYSTEM

A suitable place for an earth system is:

- A minimum of 10 m away from other earth systems, e.g. house mains, underground power or phone lines
- Away from stock or other traffic that could interfere with the installation
- Easily accessible for maintenance
- Where there is damp soil all year round, e.g. shaded or swampy areas.

#### TIPS

1. In some situations it is not possible to locate the earth system close to the energizer. As an alternative try using the existing fence line to connect to a remote earth system.
2. It may be necessary to water the earth system in dry weather to improve earth stake performance or increase the number of earth stakes.
3. Talk to our team to find out more.

## STEP 4

### TESTING YOUR EARTH SYSTEM

Test your earth system to ensure it's working properly.

#### To do this:

1. Turn off the energizer.
2. Short circuit the fence to ground at least 100 m away from the energizer. This can be done by laying steel rods or pipes against the fence. In dry or sandy soils drive the rods into the soil up to 300 mm.
3. Turn on the energizer.
4. Use a digital voltmeter (see pg 29) to measure the fence voltage. It should read less than 2 kV. If not, repeat steps 1-3 using more steel rods or pipes.
5. Attach the voltmeter clip to the last earth rod of the earthing system.
6. Insert the voltmeter probe into the soil at the full length of the leads.
7. The voltmeter reading should be no more than 0.3 kV. If the reading is higher than this, the earth system is inadequate. See the earthing checklist opposite, add more earth rods or find a better location for your earth system.

#### EARTH SYSTEM CHECKLIST

- All wires are joined securely
- Connections to earth rods are secure
- Earth rods are at least 3 m apart
- Earth rods are at least 2 m long
- There are a sufficient number of earth rods
- All parts of the earth system are made of the same metal
- The earth rods are driven deeply into the soil (100 mm exposed)
- Earth rods are a minimum of 10 m away from buildings or other electrified earth systems, e.g. house mains, underground power or phone lines.

#### TICK HERE

☐  
☐  
☐  
☐  
☐  
☐  
☐  
☐

## STEP 3

### INSERT THE EARTH RODS

The number of earth rods required depends on the type of energizer you're using to power the fence and the soil conductivity. It is recommended that you consult with your local retailer/distributor for the correct number of earth rods to suit your specific location.

1. Space the required number of 2 m earth rods at least 3 m apart. If using a bentonite salt earth system, space the earth rods at least 10 m apart.
2. Ensure that the earth rods protrude out of the soil by 100 mm so they can be easily connected.
3. Connect the earth rods in series using earth clamps and insulated cable\* in one continuous length without joins.

\* Note you will need to strip small sections of the insulation away from the cable to connect to the earth clamp/earth rod.







# Fence Tools



In 1895 a young pioneer Ernest Hayes began farming the rugged back country of New Zealand's South Island and through his background in engineering, soon began to develop the tools that would help turn this wilderness back country into productive land.

Initially produced by hand, Hayes' simple tools began to develop a solid reputation and in 1902 he established the company that would proudly bear his name.

Times have changed, but the Hayes product you buy today remains a tribute to Ernest Hayes' imagination, drive, energy and determination to be the best.

Now 125 years on, Hayes products can be found hard at work in Australia and over 25 countries around the world.

## ProCrimp & Crimp Sleeves

**ProCrimp**  
(880 0000-123)

4-in-1 fencing tool - crimping tool, staple puller, cable stripper, and wire cutter.

Hardened stainless steel components provide strength and corrosion resistance

Double action crimping jaws maximise crimping force and enhance locking action for gripping staples

Flat head jaws give improved stability when removing staples

Extra long handles for improved crimping power and greater leverage for removing staples



**Crimp Sleeves**

The easiest and most effective means of joining wire. Creates a joint that exceeds the breaking strength of wire.

**HC2**  
Suitable for 1.6 - 2.5 mm (16 - 12½ gauge) fence wire  
Pot of 100 (880 0000-124) Tub of 500 (880 0000-016)

**HC3**  
Suitable for 2.50 - 3.15 mm (12½ - 10 gauge) fence wire  
Pot of 50 (880 0000-090) Tub of 500 (880 0000-071)

**HC4**  
Suitable for 3.55 - 4.0 mm (9 - 8 gauge) fence wire  
Pot of 50 (880 0000-105)

**HCB** Pot of 50 (880 0000-034)  
Suitable for barbed wire

**HCE** Pot of 50 (880 0000-052)  
For connection to electric fences



**Fastlok™ Wire Connector**

Reusable wire connector  
Pot of 10 (880 0002-099)



## Wire Strainers

### Smooth Grip Chain Strainer

The **original** chain and grab wire strainer. Proven in the field for over 100 years.

Heavy duty industry leader

Supplied with with anchor hook and extra long chain **H300AL** (880 0000-093)



*"My team's tools get a hard time yet they must continue to perform. After 100's of kilometres of conventional, electric, horticultural and vineyard fencing, Hayes is definitely my preferred brand"*

Gordy Davy - Fence Contractor, 10 years (Katikati, New Zealand)

## Fence Post Tools

### Steel Standard Lifter

**H325** (880 0000-121)

Robust design with excellent leverage



## Accessories

### Economy Crimp Tool

**872085** (880 0000-088)

Double action crimping jaws maximise crimping force and enhance locking action for stripping wire

Extra long handles for improved crimping power

Soft grip handles for improved crimping power

Cuts wire up to 4.00 mm (8ga)

Locking action makes stripping underground cable easy









# Meet our Territory Managers


















## REGIONAL MANAGERS

-  **JAMES ELLIS**  
WESTERN  
0409 229 368
-  **CRAIG WEINART**  
SOUTHERN  
0418 773 811
-  **ROB DORO**  
NORTHERN  
0436 841 369
-  **GREGG BLATCHLY**  
REGIONAL MANAGER  
NORTH AUSTRALIA  
0428 137 836
-  **SCOTT DAVIS**  
REGIONAL MANAGER SOUTH/  
WESTERN AUSTRALIA  
0419 783 987

## LIVESTOCK SMART FARMING

## TERRITORY MANAGER

-  **1. HAYLEY GOAD**  
NORTHERN WA  
0408 908 905
-  **2. KIM MATSEN**  
SOUTHERN WA  
0427 134 022
-  **3. TRISTAN EDWARDS**  
NORTHERN SA & NT  
0447 711 445
-  **4. JAMES ELLIS**  
SOUTHERN SA WESTERN VIC  
0409 229 368
-  **5. TREVOR DOWD**  
WESTERN VIC  
0436 631 958
-  **6. MELISSA CAMPBELL**  
NORTHERN VIC  
0448 869 340
-  **7. JAYDEN STRATTON**  
GIPPSLAND VIC  
0409 229 328
-  **8. MATT STIRLING**  
TASMANIA  
0418 285 662
-  **9. SOPHIE KINSTLER**  
SOUTHERN NSW  
0427 031 331
-  **10. KEN PETTIT**  
CENTRAL NSW  
0458 555 946
-  **11. JOHN BROTHIE**  
NORTHERN NSW  
0427 698 833
-  **12. TREVOR WILCOX**  
SOUTHEAST QLD  
0409 354 624
-  **13. PAUL TINDALL**  
WESTERN QLD  
0429 610 540
-  **14. SHEFFY DEEN**  
CENTRAL QLD  
0407 668 409
-  **15. DANE CARUANA**  
NORTHERN QLD  
0427 321 843

Or call our head office on 1800 641 324



***Works better  
together.***

**We're committed to delivering a broader, integrated animal management portfolio, so we've united our product brands under one family – Datamars Livestock.**

Tru-Test, Z Tags and Prattley products, complemented by solutions from Speedrite, Stafix, Hayes and NJPhillips, allow Datamars Livestock to offer a complete livestock management ecosystem for sheep, cattle and dairy farmers. Our goal is to help you breed the best possible genetics, rear animals to target weights and sell at the best possible price.

Our products work with each other, but most importantly – they work with you.

Contact your local Datamars Livestock Territory Manager to find out more.

***livestock.datamars.com***

**Tru-Test™**  
DATAMARS

Tru-Test's heat, health and fence monitoring solutions, weighing and electronic identification products help farmers improve productivity and profitability.

**Z  
TAGS™**  
DATAMARS

Providing farmers with their identification needs for over 20 years, Z Tags products include visual tags, radio frequency identification tags and innovative applicators that make tagging livestock easy, safe and compliant.

**Speedrite™**  
DATAMARS

From incredibly powerful mains energizers to a complete range of integrated electric fence solar energizers, Speedrite products offer a seriously unbeatable combination of power, usability, portability and value that take performance to a whole new level.

**STAFIX™**  
by Datamars

Stafix energizers are recognised the world over for their extreme reliability, quality and performance. And for good reason. The features and technologies of Stafix products have been developed through decades of experience to deliver rugged and reliable electric fencing solutions.

**HAYES™**

Proudly made in New Zealand, Hayes tools are found hard at work, up and down the country. Products bearing the Hayes' name are built to last, with no compromise on quality and durability.

**Prattley**

Prattley has enjoyed a partnership with Tru-Test products over the last decade to bring quality drafting solutions to the Australian sheep industry.



# **DATAMARS** ***Livestock***

***livestock.datamars.com***

***Let's talk. 1800 641 324***

**Tru-Test.**  
DATAMARS

**Z**  
**TAGS.**  
DATAMARS

**Speedrite.**  
DATAMARS

**STAFIX**  
by Datamars

**HAYES™**

**Prattley**