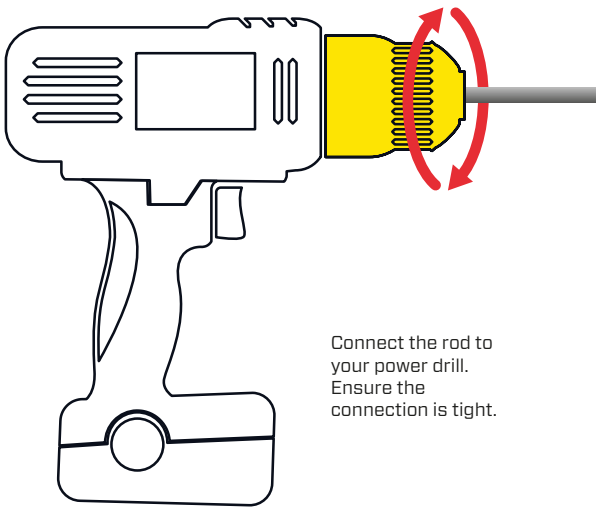


## EZE EARTH DRILL INSTRUCTIONS

### TIGHTEN CONNECTION



Connect the rod to your power drill. Ensure the connection is tight.

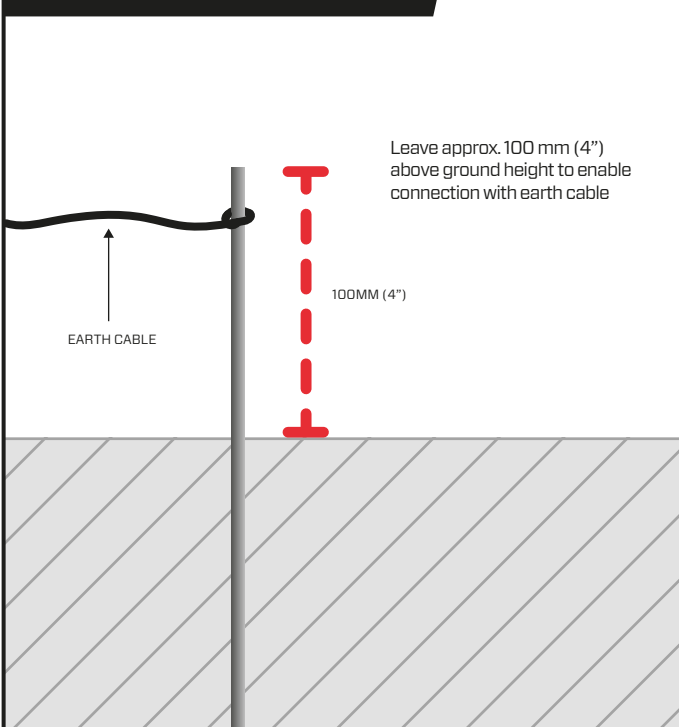
### DRILL IN GROUND



Activate the drill and guide the rod into the ground.

Auger end of rod

### EXPOSED HEIGHT

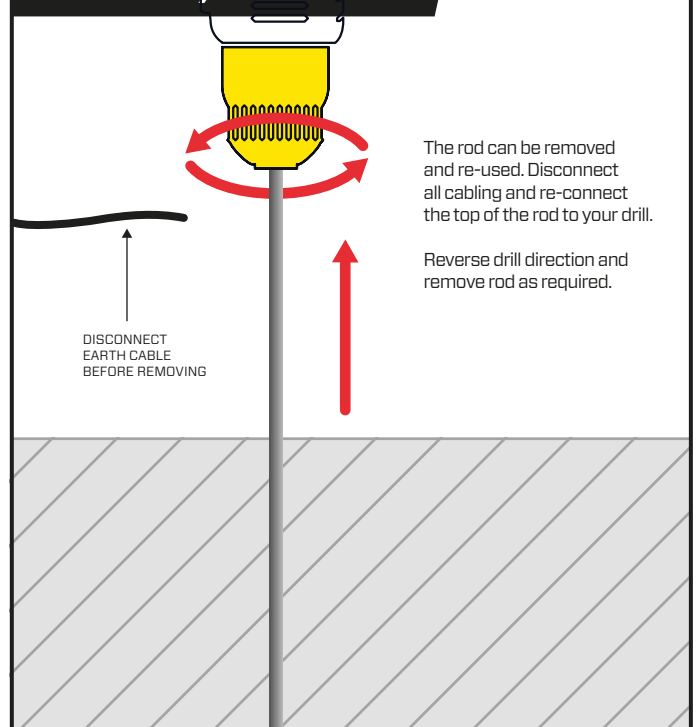


Leave approx. 100 mm (4") above ground height to enable connection with earth cable

100MM (4")

EARTH CABLE

### RE-USE/POSITION



The rod can be removed and re-used. Disconnect all cabling and re-connect the top of the rod to your drill.

Reverse drill direction and remove rod as required.

DISCONNECT EARTH CABLE BEFORE REMOVING